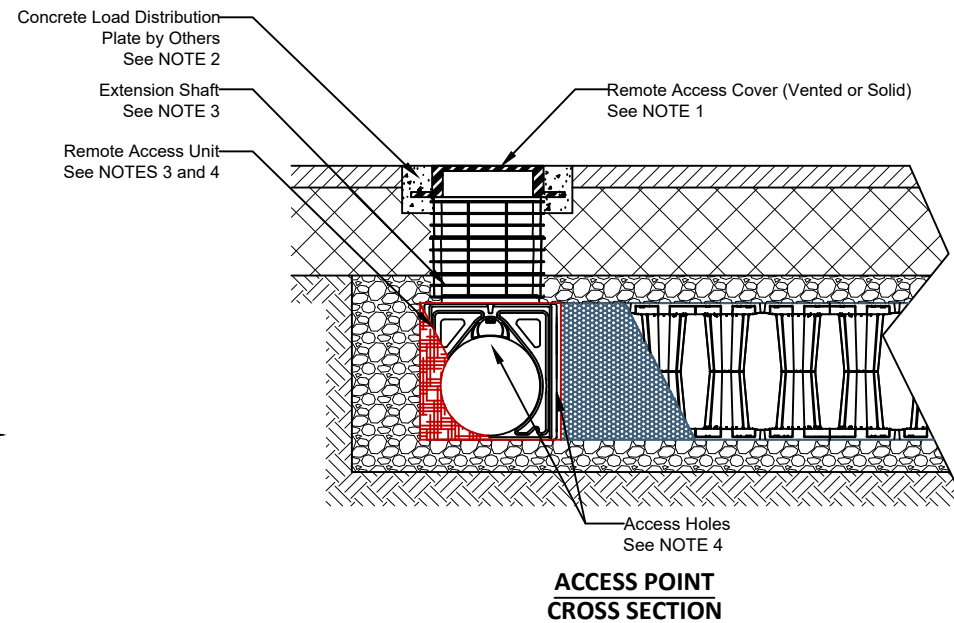


**STORMBRIXX SEDIMENT FILTRATION TUNNEL  
EXAMPLE LAYOUT**  
NTS

NOTE 1: Sump below pipe inverts to be specified by Site Design Engineer. Bypass structures may be installed outside or within the tank footprint depending upon the structure's geometry. ACO recommends that top of bypass weir or invert of bypass pipe is approximately 2.5' above the design tank invert. Contact ACO for more information.  
NOTE 2: Tank Dimensions, Module Orientation, and Number of Inlets varies based on project-specific layer orientation drawings.



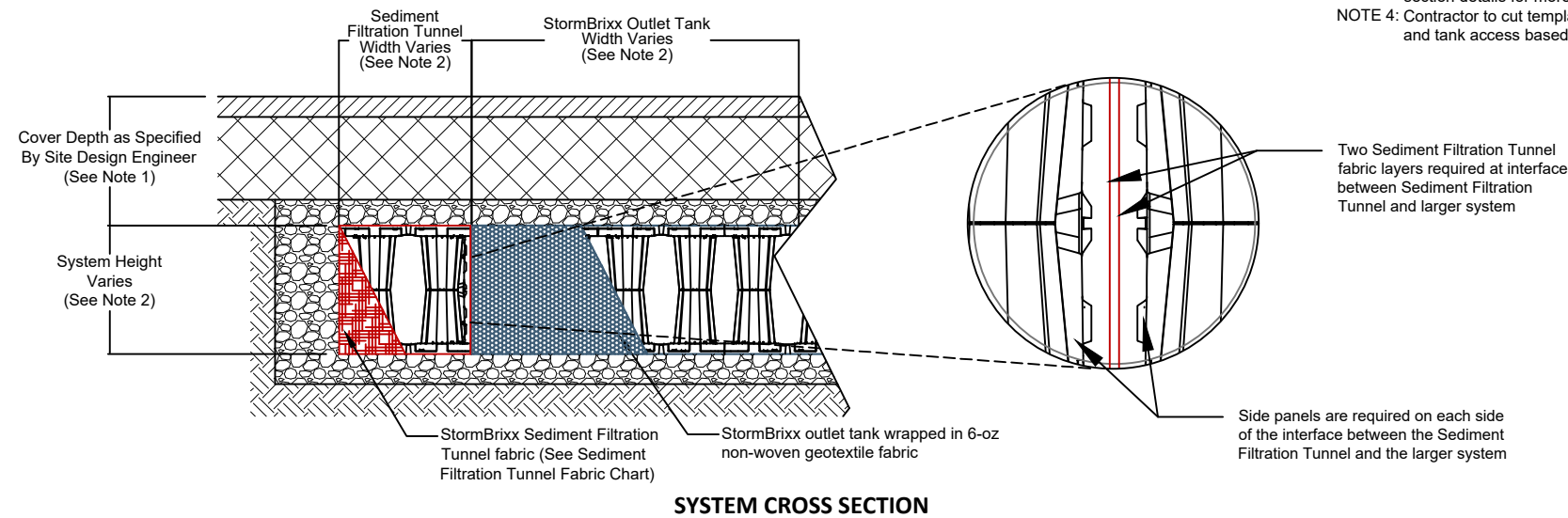
**ACCESS POINT  
CROSS SECTION**  
NTS

NOTE 1: Ventilation may be crucial to reducing the pressure build up within the system. If solid access covers are used, alternative methods of ventilation are recommended.  
NOTE 2: Concrete Load Plate not required for unpaved applications. Consult Engineer of Record for requirements  
NOTE 3: Type and Number of StormBrixx Remote Access Units and Extension Shafts are based on the application. Depicted is one 600HD Remote Access Unit and two Extension Shafts. See project-specific layout drawings and section details for more information.  
NOTE 4: Contractor to cut template holes on side walls, top and/or bottom of the Remote Access Unit to allow water flow and tank access based on the project layer orientation drawings.

**REMOTE ACCESS UNIT  
PIPE DIAMETER CHART**

| Inlet/Outlet Pipe Diameter |           |
|----------------------------|-----------|
| Nominal Pipe               | 4 inches  |
| Template Hole              | 6 inches  |
| Sizes for Side Wall        | 8 inches  |
|                            | 10 inches |
|                            | 12 inches |
|                            | 15 inches |

NOTE 1: Cut inlet / outlet pipe hole prior to side panel installation.  
NOTE 2: Contact ACO for guidance for inlet / outlet pipes larger than 15-inch diameter



**SYSTEM CROSS SECTION**  
NTS

NOTE 1: Minimum Cover Depth varies depending on module type, system height, subsurface conditions, and anticipated traffic type and volume. See Standard Details for selected StormBrixx system for more information.  
NOTE 2: Type and Number of StormBrixx Module layers may vary - 1-layer 600HD Modules depicted in detail. See Standard Detail Sheets for tank section views. See project layout drawings for footprint dimensions  
NOTE 3: Module Type and System Height for the Sediment Filtration Tunnel will match the remainder of the StormBrixx tank  
NOTE 4: Internal System Overflows may be used for systems heights greater than 2.5'. Contact ACO for more information.

**SEDIMENT FILTRATION TUNNEL  
FABRIC CHART**

| ACO StormBrixx - Sediment Filtration Tunnel - Geotextile Fabric Requirements |   |                            |                             |
|--|---|----------------------------|-----------------------------|
| Material Description   | Needlepunched Non-woven geotextile fabric inert to biological degradation |                            |                             |
| Properties   | Test Method   | Unit                       | Minimum Average Per Roll    |
| Grab Tensile Strength  | ASTM D4632  | lbs (N)                    | 250 (1113)                  |
| Grab Tensile Elongation  | ASTM D4632  | %                          | 50                          |
| Trapezoid Tear Strength  | ASTM D4533  | lbs (N)                    | 100 (445)                   |
| CBR Puncture Strength  | ASTM D6241  | lbs (N)                    | 700 (3115)                  |
|  |   |                            | <b>Minimum Opening Size</b> |
| Apparent Opening Size (AOS)  | ASTM D4751  | U.S. Sieve (mm)            | 100 (0.15)                  |
|  |   |                            | <b>Minimum Roll Value</b>   |
| Permittivity   | ASTM D4491  | sec <sup>-1</sup>          | 0.8                         |
| Flow Rate  | ASTM D4491  | gal/min/sq ft (l/min/sq m) | 75 (3056)                   |
|  |   |                            | <b>Minimum Test Value</b>   |
| UV Resistance (at 500 hours)   | ASTM D4355  | % strength retained        | 70                          |
|  |   |                            | <b>Minimum Value</b>        |
| Approximate Weight per Square Yard   |   | oz/sq yd (g/sq m)          | 9.8 (332)                   |

NOTE 1: Fabric shall be installed with minimum laps as specified by the fabric manufacturer.

|                           |                              |
|---------------------------|------------------------------|
| DRAWN BY<br><b>A Frye</b> | CHECKED BY<br><b>J Jonke</b> |
| DATE<br><b>01/13/2025</b> | REV.<br><b>0</b>             |

**STORMBRIXX STANDARD DETAILS**  
**PERIMETER SEDIMENT FILTRATION TUNNEL**  
**INFILTRATION TANK**

**ACO, INC.**

|  |  |  |
|--|--|--|
| <b>WEST SALES OFFICE</b><br>825 W BEECHCRAFT ST.<br>CASA GRANDE, AZ 85122<br>Tel. (888) 490-9552<br>Fax (520) 421-9899 | <b>EAST SALES OFFICE</b><br>9470 PINECONE DRIVE<br>MENTOR, OH 44060<br>Tel. (800) 543-4764<br>Fax (440) 639-7235 | <b>SOUTHEAST SALES OFFICE</b><br>481 MUNN RD. SUITE #225<br>FORT MILL, SC 29715<br>Tel. (440)-639-7230<br>Fax (803)-802-1063 |
|--|--|--|

www.acoswm.com