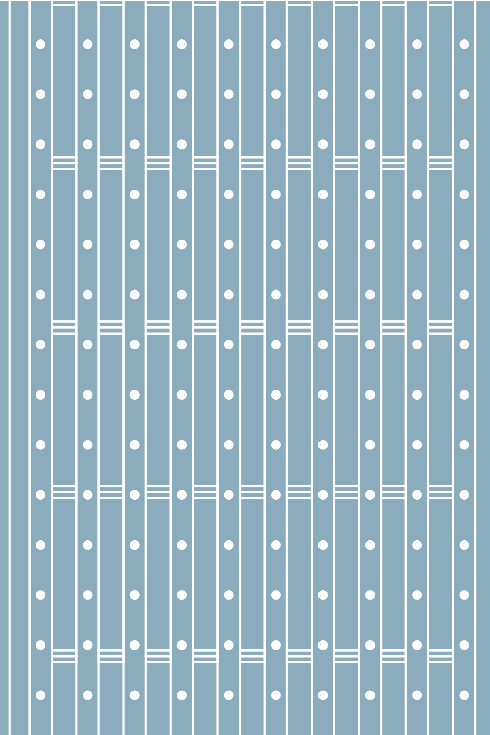




Surface Water Management



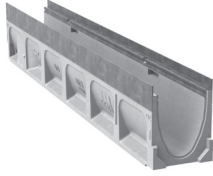
2025

Standard Products
Drain Price List
1 of 5

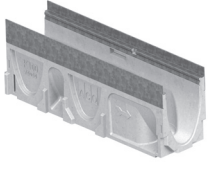
ACO Drain

Effective January 1, 2025

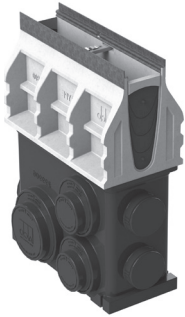
K100 Channel -
39.37" (1 m)



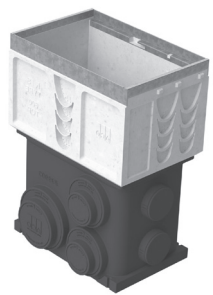
K100 Channel -
19.69" (0.5 m)



K1-901 In-line Catch Basin



K1-621 Style Catch Basin



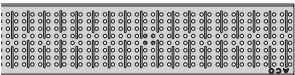
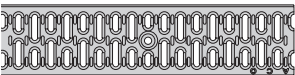

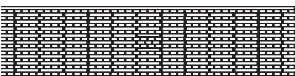
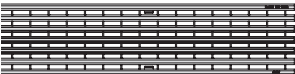
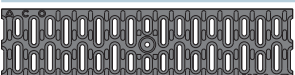
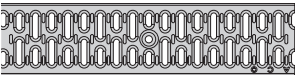
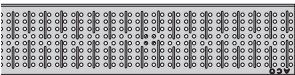
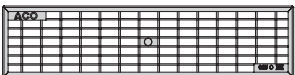
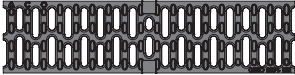


**KlassikDrain K100/KS100
Parts Table**

	K100 Galvanized Edge			KS100 Stainless Edge			
	Part No.	Price \$	Weight lbs	Pallet Qty	Part No.	Price \$	Weight lbs
K1-00 Constant depth channel - 39.37" (1 m) ¹	74041	156.00	28.1	40	74441	299.00	28.1
K1-1 Sloped channel - 39.37" (1 m)	74001	156.00	28.1	40	74401	299.00	28.1
K1-2 Sloped channel - 39.37" (1 m)	74002	156.00	28.9	40	74402	299.00	28.9
K1-3 Sloped channel - 39.37" (1 m)	74003	156.00	29.7	40	74403	299.00	29.7
K1-4 Sloped channel - 39.37" (1 m)	74004	156.00	30.5	40	74404	299.00	30.5
K1-5 Sloped channel - 39.37" (1 m) ¹	74005	156.00	31.3	40	74405	299.00	31.3
K1-6 Sloped channel - 39.37" (1 m)	74006	156.00	32.1	40	74406	299.00	32.1
K1-7 Sloped channel - 39.37" (1 m)	74007	156.00	32.9	40	74407	299.00	32.9
K1-8 Sloped channel - 39.37" (1 m)	74008	156.00	33.7	40	74408	299.00	33.7
K1-9 Sloped channel - 39.37" (1 m)	74009	156.00	34.5	40	74409	299.00	34.5
K1-10 Sloped channel - 39.37" (1 m) ¹	74010	156.00	35.3	40	74410	299.00	35.3
K1-010 Constant depth channel - 39.37" (1 m) ¹	74043	156.00	35.3	40	74443	299.00	35.3
K1-0103 Constant depth channel - 19.69" (0.5 m) ¹	74044	106.00	17.0	80	74444	206.00	17.0
K1-11 Sloped channel - 39.37" (1 m)	74011	156.00	36.1	32	74411	299.00	36.1
K1-12 Sloped channel - 39.37" (1 m)	74012	156.00	36.9	32	74412	299.00	36.9
K1-13 Sloped channel - 39.37" (1 m)	74013	156.00	37.7	32	74413	299.00	37.7
K1-14 Sloped channel - 39.37" (1 m)	74014	156.00	38.5	32	74414	299.00	38.5
K1-15 Sloped channel - 39.37" (1 m) ¹	74015	156.00	39.3	32	74415	299.00	39.3
K1-16 Sloped channel - 39.37" (1 m)	74016	156.00	40.1	32	74416	299.00	40.1
K1-17 Sloped channel - 39.37" (1 m)	74017	156.00	40.9	32	74417	299.00	40.9
K1-18 Sloped channel - 39.37" (1 m)	74018	156.00	41.7	32	74418	299.00	41.7
K1-19 Sloped channel - 39.37" (1 m)	74019	156.00	42.5	32	74419	299.00	42.5
K1-20 Sloped channel - 39.37" (1 m) ¹	74020	156.00	43.4	32	74420	299.00	43.4
K1-020 Constant depth channel - 39.37" (1 m) ¹	74045	156.00	43.4	32	74445	299.00	43.4
K1-0203 Constant depth channel - 19.69" (0.5 m) ¹	74046	106.00	20.5	64	74446	206.00	20.5
K1-21 Sloped channel - 39.37" (1 m)	74021	156.00	44.2	32	74421	299.00	44.2
K1-22 Sloped channel - 39.37" (1 m)	74022	156.00	45.0	32	74422	299.00	45.0
K1-23 Sloped channel - 39.37" (1 m)	74023	156.00	45.8	32	74423	299.00	45.8
K1-24 Sloped channel - 39.37" (1 m)	74024	156.00	46.6	32	74424	299.00	46.6
K1-25 Sloped channel - 39.37" (1 m) ¹	74025	156.00	47.4	32	74425	299.00	47.4
K1-26 Sloped channel - 39.37" (1 m)	74026	156.00	48.2	32	74426	299.00	48.2
K1-27 Sloped channel - 39.37" (1 m)	74027	156.00	49.0	32	74427	299.00	49.0
K1-28 Sloped channel - 39.37" (1 m)	74028	156.00	49.8	32	74428	299.00	49.8
K1-29 Sloped channel - 39.37" (1 m)	74029	156.00	50.6	32	74429	299.00	50.6
K1-30 Sloped channel - 39.37" (1 m) ¹	74030	156.00	51.4	32	74430	299.00	51.4
K1-030 Constant depth channel - 39.37" (1 m) ¹	74047	156.00	51.4	32	74447	299.00	51.4
K1-0303 Constant depth channel - 19.69" (0.5 m) ¹	74048	106.00	24.0	64	74448	206.00	24.0
K1-31 Sloped channel - 39.37" (1 m)	74031	156.00	52.2	32	74431	299.00	52.2
K1-32 Sloped channel - 39.37" (1 m)	74032	156.00	53.0	32	74432	299.00	53.0
K1-33 Sloped channel - 39.37" (1 m)	74033	156.00	53.8	32	74433	299.00	53.8
K1-34 Sloped channel - 39.37" (1 m)	74034	156.00	54.6	32	74434	299.00	54.6
K1-35 Sloped channel - 39.37" (1 m) ¹	74035	156.00	55.4	32	74435	299.00	55.4
K1-36 Sloped channel - 39.37" (1 m)	74036	156.00	56.2	32	74436	299.00	56.2
K1-37 Sloped channel - 39.37" (1 m)	74037	156.00	57.0	32	74437	299.00	57.0
K1-38 Sloped channel - 39.37" (1 m)	74038	156.00	57.9	32	74438	299.00	57.9
K1-39 Sloped channel - 39.37" (1 m)	74039	156.00	58.7	32	74439	299.00	58.7
K1-40 Sloped channel - 39.37" (1 m) ¹	74040	156.00	59.5	32	74440	299.00	59.5
K1-040 Constant depth channel - 39.37" (1 m) ¹	74049	156.00	59.5	32	74449	299.00	59.5
K1-0403 Constant depth channel - 19.69" (0.5 m) ¹	74050	106.00	27.5	64	74450	206.00	27.5
K1-901G/901S In-line catch basin - 19.69" (0.5 m) ^{2,4}	94608	485.00	52.6	6	94609	543.00	52.6
K1-906G/906S In-line catch basin - 19.69" (0.5 m) ^{4,5}	97934	505.00	113.4	6	97935	542.00	113.4
K1-621G/621S Catch basin - 19.69" (0.5 m) ^{2,4}	94617	762.00	55.8	6	94618	796.00	55.8
K1-622G/622S Catch basin - 19.69" (0.5 m) ^{4,5}	97915	841.00	137.5	6	97916	962.00	137.5
K1-631G/631S Catch basin - 19.69" (0.5 m) ^{3,4}	94631	948.00	65.8	6	94632	963.00	65.8
K1-632G/632S Catch basin - 19.69" (0.5 m) ^{4,6}	97925	1,057.00	183.0	6	97926	1,177.00	183.0
Series 611 catch basin riser polymer (optional)	91110	239.00	45.0	24	91110	239.00	45.0
Series 600 catch basin riser plastic (optional)	99902	208.00	10.0	24	99902	208.00	10.0
Foul air trap - fits Type 900 & 600 basins	90854	87.00	1.2	-	90854	87.00	1.2
K1-304-6 6" Inlet end cap	96839	81.00	5.2	-	96844	86.00	5.2
K1-308-6 6" Outlet end cap	96840	81.00	5.0	-	96845	86.00	5.0
K1-404-6 6" Inlet end cap	96834	81.00	6.0	-	96846	86.00	6.0
K1-408-6 6" Outlet end cap	96836	81.00	5.8	-	96847	86.00	5.8
K1 Universal inlet/outlet/end cap	96822	21.00	0.4	-	96822	21.00	0.4
Debris strainer for 4" bottom knockout	93488	63.00	0.2	-	93488	63.00	0.2
Outlet adapter - 4" oval to 6" round	95140	26.00	1.1	-	95140	26.00	1.1
Installation device - 4" system	97477	36.00	2.8	-	97477	36.00	2.8
Grate removal tool	01318	36.00	0.3	-	01318	36.00	0.3
QuickLok® locking bar - 4" system	02899	11.00	0.1	-	02899	11.00	0.1
QuickLok® locking bar - Series 900 catch basin	98717	28.00	0.1	-	98717	28.00	0.1
QuickLok® locking bar - Series 600 catch basin	94564	70.00	0.1	-	94564	70.00	0.1

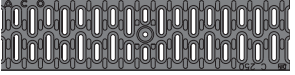

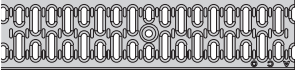
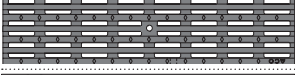

Notes

1. This channel features 4" & 6" bottom knockouts.
2. Catch basin assembly: Polymer concrete top, locking bar, blanking end kit, trash bucket and plastic base. Select grate to suit.
3. Catch basin assembly: Polymer concrete top, locking bar, blanking end kit, deep trash bucket, riser and plastic base. Select grate to suit.
4. For channels and series 900 catch basin - see K100 grates on page 2. For series 600 catch basin - see K300 grate options on pages 6-7.
5. Catch basin assembly: Polymer concrete top, locking bar, blanking end kit, trash bucket and polymer base. Select grate to suit.
6. Catch basin assembly: Polymer concrete top, locking bar, blanking end kit, deep trash bucket, riser and polymer base. Select grate to suit.

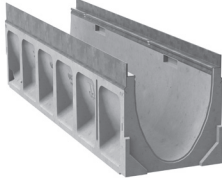
DrainLok K100/KS100 Grates

		Length in (mm)	Part No.	Price \$	Weight lbs	Pallet Qty
LOAD CLASS A - EN 1433 - 3,372 LBS - 70 PSI						
	Type 410D Galvanized perforated	39.37 (1000)	12666	72.00	6.3	200
	Type 412D Galvanized perforated	19.69 (500)	12667	53.00	3.2	400
	Type 451D Stainless perforated	39.37 (1000)	12664	244.00	6.3	200
	Type 453D Stainless perforated	19.69 (500)	12665	162.00	3.2	400
	Type 420D Galvanized slotted	39.37 (1000)	12610	47.00	5.9	200
	Type 421D Galvanized slotted	19.69 (500)	12611	31.00	3.0	400
	Type 450D Stainless slotted	39.37 (1000)	12640	215.00	5.9	200
	Type 452D Stainless slotted	19.69 (500)	12641	145.00	3.0	400
	Type 494D Black plastic longitudinal	19.69 (500)	99575	54.00	1.8	400
	Type 495D Gray plastic longitudinal	19.69 (500)	99576	54.00	1.8	400
	Type 496D Tan plastic longitudinal	19.69 (500)	99577	54.00	1.8	400
LOAD CLASS B - EN 1433 - 28,101 LBS - 580 PSI						
	Type 447D Stainless longitudinal	39.37 (1000)	142215	844.00	8.0	200
	Type 448D Stainless longitudinal	19.69 (500)	142216	599.00	4.0	-
	Type 438D Galvanized longitudinal	39.37 (1000)	132555	123.00	8.0	50
	Type 437D Galvanized longitudinal	19.69 (500)	132550	69.00	4.0	25
LOAD CLASS C - EN 1433 - 56,202 LBS - 1,160 PSI						
	Type 492D Black composite microgrip slotted	19.69 (500)	132720	69.00	2.2	50
	Type 425D Galvanized slotted	39.37 (1000)	12614	112.00	10.0	200
	Type 426D Galvanized slotted	19.69 (500)	12615	69.00	5.0	400
	Type 455D Stainless slotted	39.37 (1000)	12644	459.00	10.0	200
	Type 457D Stainless slotted	19.69 (500)	12645	233.00	5.0	400
	Type 411D Galvanized perforated	39.37 (1000)	12656	159.00	10.0	200
	Type 413D Galvanized perforated	19.69 (500)	12657	86.00	5.0	400
	Type 465D Stainless perforated	39.37 (1000)	12654	459.00	10.0	200
	Type 466D Stainless perforated	19.69 (500)	12655	235.00	5.0	400
	Type 405D Galvanized mesh	39.37 (1000)	132880	152.00	9.1	100
	Type 406D Galvanized mesh	19.69 (500)	132881	119.00	4.6	100
	Type 430D Stainless mesh	39.37 (1000)	132882	644.00	9.2	100
	Type 431D Stainless mesh	19.69 (500)	132883	463.00	4.6	100
	Type 460D Ductile iron slotted	19.69 (500)	12670	64.00	8.0	200
	Type 476D Ductile iron longitudinal	19.69 (500)	142171	96.00	8.4	200
	Type 480D Ductile iron wave	19.69 (500)	99578	105.00	8.0	160

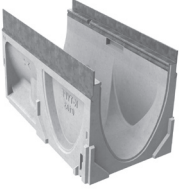
QuickLok® K100/KS100 Grates

LOAD CLASS C - EN 1433 - 56,202 LBS - 1,160 PSI						
	Type 492Q Black plastic slotted	19.69 (500)	31710	65.00	3.5	204
	Type 479Q Ductile iron mosaic	19.69 (500)	97116	84.00	9.6	200
LOAD CLASS E - EN 1433 - 134,885 LBS - 2,785 PSI						
	Type 435Q Galvanized slotted	39.37 (1000)	31550	167.00	13.7	200
	Type 436Q Galvanized slotted	19.69 (500)	31551	107.00	6.8	400
	Type 490Q Stainless slotted	39.37 (1000)	31650	532.00	13.7	200
	Type 493Q Stainless slotted	19.69 (500)	31651	320.00	6.8	400
	Type 478Q Ductile iron longitudinal	19.69 (500)	03314	89.00	13.3	200
	Type 461Q Ductile iron slotted	19.69 (500)	96752	74.00	10.5	200

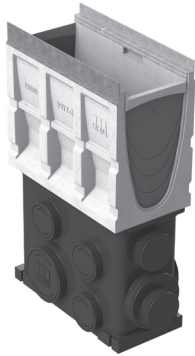
K200 Channel -
39.37" (1 m)



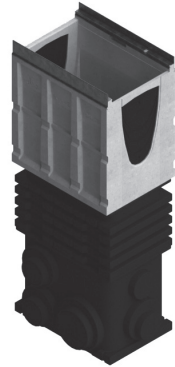
K200 Channel -
19.69" (0.5 m)



K1-902 In-line Catch Basin



K2-631 Style Catch Basin



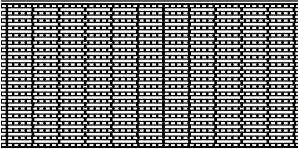
**KlassikDrain K200/KS200
Parts Table**

	K200 Galvanized Edge				KS200 Stainless Edge		
	Part No.	Price \$	Weight lbs	Pallet Qty	Part No.	Price \$	Weight lbs
K2-00 Constant depth channel - 39.37" (1 m) ¹	75041	271.00	83.6	16	75441	547.00	83.6
K2-1 Sloped channel - 39.37" (1 m)	75001	271.00	83.6	16	75401	547.00	83.6
K2-2 Sloped channel - 39.37" (1 m)	75002	271.00	84.7	16	75402	547.00	84.7
K2-3 Sloped channel - 39.37" (1 m)	75003	271.00	85.8	16	75403	547.00	85.8
K2-4 Sloped channel - 39.37" (1 m)	75004	271.00	86.9	16	75404	547.00	86.9
K2-5 Sloped channel - 39.37" (1 m) ¹	75005	271.00	88.0	16	75405	547.00	88.0
K2-6 Sloped channel - 39.37" (1 m)	75006	271.00	89.1	16	75406	547.00	89.1
K2-7 Sloped channel - 39.37" (1 m)	75007	271.00	90.2	16	75407	547.00	90.2
K2-8 Sloped channel - 39.37" (1 m)	75008	271.00	91.3	16	75408	547.00	91.3
K2-9 Sloped channel - 39.37" (1 m)	75009	271.00	92.4	16	75409	547.00	92.4
K2-10 Sloped channel - 39.37" (1 m) ¹	75010	271.00	93.5	16	75410	547.00	93.5
K2-010 Constant depth channel - 39.37" (1 m) ¹	75043	271.00	93.5	16	75443	547.00	93.5
K2-0103 Constant depth channel - 19.69" (0.5 m) ¹	75044	181.00	56.0	24	75444	369.00	56.0
K2-11 Sloped channel - 39.37" (1 m)	75011	271.00	94.6	12	75411	547.00	94.6
K2-12 Sloped channel - 39.37" (1 m)	75012	271.00	95.7	12	75412	547.00	95.7
K2-13 Sloped channel - 39.37" (1 m)	75013	271.00	96.8	12	75413	547.00	96.8
K2-14 Sloped channel - 39.37" (1 m)	75014	271.00	97.9	12	75414	547.00	97.9
K2-15 Sloped channel - 39.37" (1 m) ¹	75015	271.00	99.0	12	75415	547.00	99.0
K2-16 Sloped channel - 39.37" (1 m)	75016	271.00	100.1	12	75416	547.00	100.1
K2-17 Sloped channel - 39.37" (1 m)	75017	271.00	101.2	12	75417	547.00	101.2
K2-18 Sloped channel - 39.37" (1 m)	75018	271.00	102.3	12	75418	547.00	102.3
K2-19 Sloped channel - 39.37" (1 m)	75019	271.00	103.4	12	75419	547.00	103.4
K2-20 Sloped channel - 39.37" (1 m) ¹	75020	271.00	104.5	12	75420	547.00	104.5
K2-020 Constant depth channel - 39.37" (1 m) ¹	75045	271.00	104.5	12	75445	547.00	104.5
K2-0203 Constant depth channel - 19.69" (0.5 m) ¹	75046	181.00	64.0	24	75446	369.00	64.0
K2-21 Sloped channel - 39.37" (1 m)	75021	271.00	105.6	12	75421	547.00	105.6
K2-22 Sloped channel - 39.37" (1 m)	75022	271.00	106.7	12	75422	547.00	106.7
K2-23 Sloped channel - 39.37" (1 m)	75023	271.00	107.8	12	75423	547.00	107.8
K2-24 Sloped channel - 39.37" (1 m)	75024	271.00	108.9	12	75424	547.00	108.9
K2-25 Sloped channel - 39.37" (1 m) ¹	75025	271.00	110.0	12	75425	547.00	110.0
K2-26 Sloped channel - 39.37" (1 m)	75026	271.00	111.1	12	75426	547.00	111.1
K2-27 Sloped channel - 39.37" (1 m)	75027	271.00	112.2	12	75427	547.00	112.2
K2-28 Sloped channel - 39.37" (1 m)	75028	271.00	113.3	12	75428	547.00	113.3
K2-29 Sloped channel - 39.37" (1 m)	75029	271.00	114.4	12	75429	547.00	114.4
K2-30 Sloped channel - 39.37" (1 m) ¹	75030	271.00	115.5	12	75430	547.00	115.5
K2-030 Constant depth channel - 39.37" (1 m) ¹	75047	271.00	115.5	12	75447	547.00	115.5
K2-0303 Constant depth channel - 19.69" (0.5 m) ¹	75048	181.00	68.0	24	75448	369.00	68.0
K2-31 Sloped channel - 39.37" (1 m)	75031	271.00	116.6	12	75431	547.00	116.6
K2-32 Sloped channel - 39.37" (1 m)	75032	271.00	117.7	12	75432	547.00	117.7
K2-33 Sloped channel - 39.37" (1 m)	75033	271.00	118.8	12	75433	547.00	118.8
K2-34 Sloped channel - 39.37" (1 m)	75034	271.00	119.9	12	75434	547.00	119.9
K2-35 Sloped channel - 39.37" (1 m) ¹	75035	271.00	121.0	12	75435	547.00	121.0
K2-36 Sloped channel - 39.37" (1 m)	75036	271.00	122.1	12	75436	547.00	122.1
K2-37 Sloped channel - 39.37" (1 m)	75037	271.00	123.2	12	75437	547.00	123.2
K2-38 Sloped channel - 39.37" (1 m)	75038	271.00	124.3	12	75438	547.00	124.3
K2-39 Sloped channel - 39.37" (1 m)	75039	271.00	125.4	12	75439	547.00	125.4
K2-40 Sloped channel - 39.37" (1 m) ¹	75040	271.00	126.5	12	75440	547.00	126.5
K2-040 Constant depth channel - 39.37" (1 m) ¹	75049	271.00	126.5	12	75449	547.00	126.5
K2-0403 Constant depth channel - 19.69" (0.5 m) ¹	75050	181.00	77.0	12	75450	369.00	77.0
K2-902G/902S In-line catch basin - 19.69" (0.5 m) ^{2,4}	94611	660.00	68.0	6	94612	699.00	68.0
K2-906G/906S In-line catch basin - 19.69" (0.5 m) ^{4,5}	97937	625.00	137.1	6	97938	673.00	128.5
K2-621G/621S Catch basin - 19.69" (0.5 m) ^{2,4}	94620	830.00	91.0	6	94621	865.00	91.0
K2-622G/622S Catch basin - 19.69" (0.5 m) ^{4,5}	97917	841.00	169.7	6	97918	878.00	144.5
K2-631G/631S Catch basin - 19.69" (0.5 m) ^{3,4}	94633	990.00	101.0	6	94634	1,005.00	101.0
K2-632G/632S Catch basin - 19.69" (0.5 m) ^{4,6}	97927	1,052.00	215.2	6	97928	1,087.00	190.0
Series 611 catch basin riser polymer (optional)	91110	239.00	45.0	24	91110	239.00	45.0
Series 600 catch basin riser plastic (optional)	99902	208.00	10.0	24	99902	208.00	10.0
Foul air trap - fits Type 900 & 600 basins	90854	87.00	1.2	-	90854	87.00	1.2
K2 Universal inlet/outlet/end cap	96821	69.00	1.4	-	96821	69.00	1.4
Debris strainer for 4" bottom knockout	93488	63.00	0.2	-	93488	63.00	0.2
Installation device - 8" system	97478	37.00	4.0	-	97478	37.00	4.0
Grate removal tool	01318	36.00	0.3	-	01318	36.00	0.3
QuickLok® locking bar - 8" system	10457	28.00	0.5	-	10457	28.00	0.5
QuickLok® locking bar - Series 900 catch basin	98717	28.00	0.1	-	98717	28.00	0.1
QuickLok® locking bar - Series 600 catch basin	94564	70.00	0.1	-	94564	70.00	0.1

Notes

1. This channel features 4" & 6" bottom knockouts.
2. Catch basin assembly: Polymer concrete top, locking bar, blanking end kit, trash bucket and plastic base. Select grate to suit.
3. Catch basin assembly: Polymer concrete top, locking bar, blanking end kit, deep trash bucket, riser and plastic base. Select grate to suit.
4. For channels and 900 series catch basin - see K200 grates on page 4. For 600 series catch basin see K300 grate options on pages 6-7.
5. Catch basin assembly: Polymer concrete top, locking bar, blanking end kit, trash bucket and polymer base. Select grate to suit.
6. Catch basin assembly: Polymer concrete top, locking bar, blanking end kit, deep trash bucket, riser and polymer base. Select grate to suit.

DrainLok K200/KS200 Grates

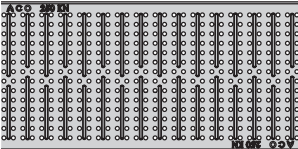
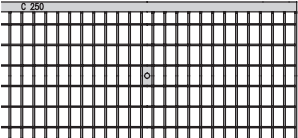
	Length in (mm)	Part No.	Price \$	Weight lbs	Pallet Qty
LOAD CLASS B - EN 1433 - 28,101 LBS - 387 PSI					
	39.37 (1000)	142219	1,630.00	18.0	100
Type 647D Stainless longitudinal					
	19.69 (500)	142220	1,095.00	9.0	100
Type 648D Stainless longitudinal					

LOAD CLASS C - EN 1433 - 56,202 LBS - 774 PSI

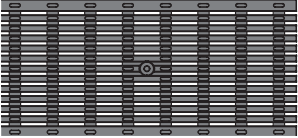
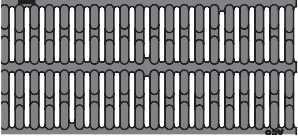
	19.69 (500)	142177	166.00	19.0	80
Type 660D Ductile iron slotted					
	19.69 (500)	142173	171.00	19.0	80
Type 676D Ductile iron longitudinal					
	19.69 (500)	99579	208.00	27.0	80
Type 680D Ductile iron wave					

QuickLok® K200/KS200 Grates

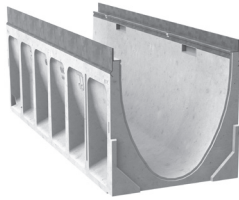
LOAD CLASS C - EN 1433 - 56,202 LBS - 774 PSI

	39.37 (1000)	98962	400.00	28.0	80
Type 611Q Galvanized perforated					
	19.69 (500)	98961	317.00	14.0	80
Type 613Q Galvanized perforated					
	39.37 (1000)	98960	1,158.00	28.0	80
Type 665Q Stainless perforated					
	19.69 (500)	98959	768.00	14.0	80
Type 666Q Stainless perforated					
	39.37 (1000)	10352	551.00	30.0	100
Type 605Q Galvanized mesh					
	19.69 (500)	10353	319.00	15.0	100
Type 606Q Galvanized mesh					
	39.37 (1000)	16032	1,723.00	28.0	100
Type 630Q Stainless mesh					
	19.69 (500)	16033	1,110.00	14.0	100
Type 631Q Stainless mesh					

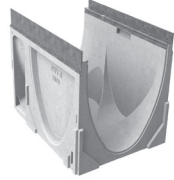
LOAD CLASS E - EN 1433 - 134,885 LBS - 1,856 PSI

	19.69 (500)	138129	256.00	26.0	80
Type 678Q Ductile iron longitudinal					
	19.69 (500)	10351	248.00	37.0	48
Type 661Q Ductile iron slotted					

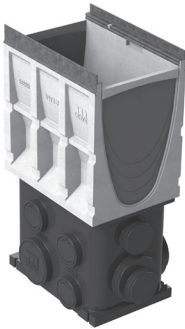
K300 Channel -
39.37" (1 m)



K300 Channel -
19.69" (0.5 m)



K3-903 In-line Catch Basin



K3 Universal Inlet/Outlet/End Cap
(6"-8"-10" Sch. 40 connections)



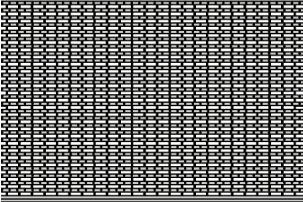
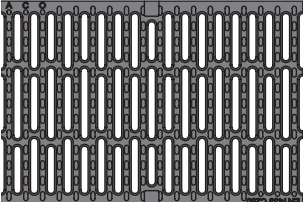
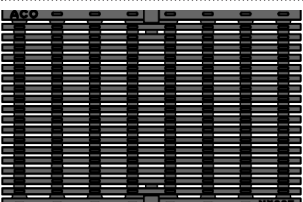
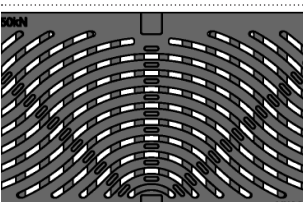
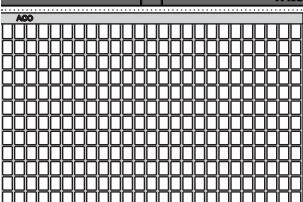
**KlassikDrain K300/KS300
Parts Table**

	K300 Galvanized Edge				KS300 Stainless Edge		
	Part No.	Price \$	Weight lbs	Pallet Qty	Part No.	Price \$	Weight lbs
K3-00 Constant depth channel - 39.37" (1 m) ¹	76041	427.00	132.6	9	76441	633.00	132.6
K3-1 Sloped channel - 39.37" (1 m)	76001	427.00	132.6	9	76401	633.00	132.6
K3-2 Sloped channel - 39.37" (1 m)	76002	427.00	133.8	9	76402	633.00	133.8
K3-3 Sloped channel - 39.37" (1 m)	76003	427.00	135.0	9	76403	633.00	135.0
K3-4 Sloped channel - 39.37" (1 m)	76004	427.00	136.2	9	76404	633.00	136.2
K3-5 Sloped channel - 39.37" (1 m) ¹	76005	427.00	137.4	9	76405	633.00	137.4
K3-6 Sloped channel - 39.37" (1 m)	76006	427.00	138.6	9	76406	633.00	138.6
K3-7 Sloped channel - 39.37" (1 m)	76007	427.00	139.8	9	76407	633.00	139.8
K3-8 Sloped channel - 39.37" (1 m)	76008	427.00	141.0	9	76408	633.00	141.0
K3-9 Sloped channel - 39.37" (1 m)	76009	427.00	142.2	9	76409	633.00	142.2
K3-10 Sloped channel - 39.37" (1 m) ¹	76010	427.00	143.4	9	76410	633.00	143.4
K3-010 Constant depth channel - 39.37" (1 m) ¹	76043	427.00	143.4	9	76443	633.00	143.4
K3-0103 Constant depth channel - 19.69" (0.5 m) ¹	76044	286.00	75.3	18	76444	423.00	75.3
K3-11 Sloped channel - 39.37" (1 m)	76011	427.00	144.6	9	76411	633.00	144.6
K3-12 Sloped channel - 39.37" (1 m)	76012	427.00	145.8	9	76412	633.00	145.8
K3-13 Sloped channel - 39.37" (1 m)	76013	427.00	147.0	9	76413	633.00	147.0
K3-14 Sloped channel - 39.37" (1 m)	76014	427.00	148.2	9	76414	633.00	148.2
K3-15 Sloped channel - 39.37" (1 m) ¹	76015	427.00	149.4	9	76415	633.00	149.4
K3-16 Sloped channel - 39.37" (1 m)	76016	427.00	150.6	9	76416	633.00	150.6
K3-17 Sloped channel - 39.37" (1 m)	76017	427.00	151.8	9	76417	633.00	151.8
K3-18 Sloped channel - 39.37" (1 m)	76018	427.00	153.0	9	76418	633.00	153.0
K3-19 Sloped channel - 39.37" (1 m)	76019	427.00	154.2	9	76419	633.00	154.2
K3-20 Sloped channel - 39.37" (1 m) ¹	76020	427.00	155.4	9	76420	633.00	155.4
K3-020 Constant depth channel - 39.37" (1 m) ¹	76045	427.00	155.4	9	76445	633.00	155.4
K3-0203 Constant depth channel - 19.69" (0.5 m) ¹	76046	286.00	82.3	18	76446	423.00	82.3
K3-21 Sloped channel - 39.37" (1 m)	76021	427.00	156.7	9	76421	633.00	156.7
K3-22 Sloped channel - 39.37" (1 m)	76022	427.00	157.9	9	76422	633.00	157.9
K3-23 Sloped channel - 39.37" (1 m)	76023	427.00	159.1	9	76423	633.00	159.1
K3-24 Sloped channel - 39.37" (1 m)	76024	427.00	160.3	9	76424	633.00	160.3
K3-25 Sloped channel - 39.37" (1 m) ¹	76025	427.00	161.5	9	76425	633.00	161.5
K3-26 Sloped channel - 39.37" (1 m)	76026	427.00	162.7	9	76426	633.00	162.7
K3-27 Sloped channel - 39.37" (1 m)	76027	427.00	163.9	9	76427	633.00	163.9
K3-28 Sloped channel - 39.37" (1 m)	76028	427.00	165.1	9	76428	633.00	165.1
K3-29 Sloped channel - 39.37" (1 m)	76029	427.00	166.3	9	76429	633.00	166.3
K3-30 Sloped channel - 39.37" (1 m) ¹	76030	427.00	167.5	9	76430	633.00	167.5
K3-030 Constant depth channel - 39.37" (1 m) ¹	76047	427.00	167.5	9	76447	633.00	167.5
K3-0303 Constant depth channel - 19.69" (0.5 m) ¹	76048	286.00	89.5	18	76448	423.00	89.5
K3-31 Sloped channel - 39.37" (1 m)	76031	427.00	168.7	9	76431	633.00	168.7
K3-32 Sloped channel - 39.37" (1 m)	76032	427.00	169.9	9	76432	633.00	169.9
K3-33 Sloped channel - 39.37" (1 m)	76033	427.00	171.1	9	76433	633.00	171.1
K3-34 Sloped channel - 39.37" (1 m)	76034	427.00	172.3	9	76434	633.00	172.3
K3-35 Sloped channel - 39.37" (1 m) ¹	76035	427.00	173.5	9	76435	633.00	173.5
K3-36 Sloped channel - 39.37" (1 m)	76036	427.00	174.7	9	76436	633.00	174.7
K3-37 Sloped channel - 39.37" (1 m)	76037	427.00	175.9	9	76437	633.00	175.9
K3-38 Sloped channel - 39.37" (1 m)	76038	427.00	177.1	9	76438	633.00	177.1
K3-39 Sloped channel - 39.37" (1 m)	76039	427.00	178.3	9	76439	633.00	178.3
K3-40 Sloped channel - 39.37" (1 m) ¹	76040	427.00	179.5	9	76440	633.00	179.5
K3-040 Constant depth channel - 39.37" (1 m) ¹	76049	427.00	179.5	9	76449	633.00	179.5
K3-0403 Constant depth channel - 19.69" (0.5 m) ¹	76050	286.00	97.7	18	76450	423.00	97.7
K3-903G/903S In-line catch basin - 19.69" (0.5 m) ^{2,4}	94614	865.00	88.0	6	94615	907.00	88.0
K3-907G/907S In-line catch basin - 19.69" (0.5 m) ^{4,5}	97919	889.00	147.3	6	97920	944.00	147.3
K3-904G/904S In-line catch basin - 19.69" (0.5 m) ^{3,4}	94635	1,005.00	98.0	6	94636	1,045.00	98.0
K3-908G/908S In-line catch basin - 19.69" (0.5 m) ^{4,6}	97929	1,082.00	192.3	6	97930	1,130.00	192.3
Series 611 catch basin riser polymer (optional)	91110	239.00	45.0	24	91110	239.00	45.0
Series 600 catch basin riser plastic (optional)	99902	208.00	10.0	24	99902	208.00	10.0
Foul air trap - fits type 900 & 600 catch basins	90854	87.00	1.2	-	90854	87.00	1.2
K3 Universal inlet/outlet/end cap	96826	103.00	2.5	-	96826	103.00	2.5
Installation device - 12" system	97479	39.00	4.9	-	97479	39.00	4.9
Grate removal tool	01318	36.00	0.3	-	01318	36.00	0.3
QuickLok® locking bar - 12" system	10458	37.00	0.7	-	10458	37.00	0.7
QuickLok® locking bar - Series 900 catch basin	98717	28.00	0.1	-	98717	28.00	0.1

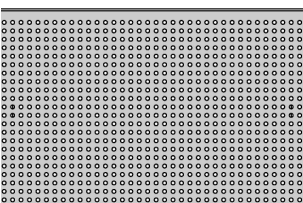
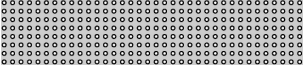
Notes

1. This channel features 6" & 8" bottom knockouts.
2. Catch basin assembly: Polymer concrete top, locking bar, blanking end kit, trash bucket and plastic base. Select grate to suit.
3. Catch basin assembly: Polymer concrete top, locking bar, blanking end kit, deep trash bucket, riser and plastic base. Select grate to suit.
4. For channels and 900 series catch basin - see K300 grates on pages 6 and 7.
5. Catch basin assembly: Polymer concrete top, locking bar, blanking end kit, trash bucket and polymer base. Select grate to suit.
6. Catch basin assembly: Polymer concrete top, locking bar, blanking end kit, deep trash bucket, riser and polymer base. Select grate to suit.

DrainLok K300/KS300 Grates

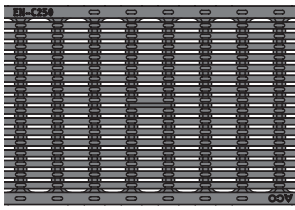
		Length in (mm)	Part No.	Price \$	Weight lbs	Pallet Qty
LOAD CLASS A - EN 1433 - 3,372 LBS - 58 PSI						
	Type 847D Stainless longitudinal	39.37 (1000)	142223	2,713.00	29.0	100
	Type 848D Stainless longitudinal	19.69 (500)	142224	1,807.00	14.0	100
LOAD CLASS C - EN 1433 - 56,202 LBS - 967 PSI						
	Type 860D Ductile iron slotted	19.69 (500)	13870	248.00	38.0	50
	Type 876D Ductile iron longitudinal	19.69 (500)	99588	276.00	35.0	48
	Type 880D Ductile iron wave	19.69 (500)	99581	312.00	37.0	36
	Type 805D Galvanized mesh	19.69 (500)	133675	506.00	26.2	50
	Type 830D Stainless mesh	19.69 (500)	133678	1,757.00	29.5	50

QuickLok® K300/KS300 grates

LOAD CLASS C - EN 1433 - 56,202 LBS - 967 PSI						
	Type 811Q Galvanized perforated	39.37 (1000)	98967	912.00	68.0	80
	Type 813Q Galvanized perforated	19.69 (500)	98966	609.00	34.0	80
	Type 865Q Stainless perforated	39.37 (1000)	98968	2,148.00	68.0	80
	Type 866Q Stainless perforated	19.69 (500)	98969	1,516.00	35.0	80

QuickLok® K300/KS300 Grates (cont.)

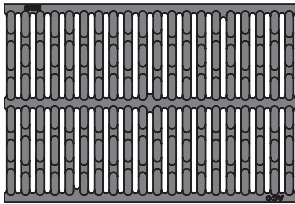
LOAD CLASS E - EN 1433 - 134,885 LBS - 2,321 PSI



Type 878Q Ductile iron longitudinal

Length in (mm) Part No. Price \$ Weight lbs Pallet Qty

19.69 (500) 138130 **373.00** 52.0 36



Type 861Q Ductile iron slotted

19.69 (500) 10431 **373.00** 58.0 36

K50 Channel -
39.37" (1 m)



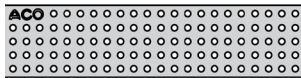
**MiniKlassik K50/KS50
Parts Table**

Constant depth channel - 39.37" (1 m)
Closing end cap

K50 Galvanized Edge				KS50 Stainless Edge		
Part No.	Price \$	Weight lbs	Pallet Qty	Part No.	Price \$	Weight lbs
04071	103.00	18.0	60	06750	162.00	18.0
95395	20.00	0.3	-	95403	28.00	0.3

Non-locking K50/KS50 Grates

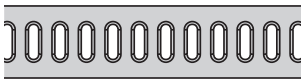
LOAD CLASS A - EN 1433 - 3,372 LBS - 70 PSI



Type 210 Galvanized perforated
Type 251 Stainless perforated

Length in (mm) Part No. Price \$ Weight lbs Pallet Qty

39.37 (1000) 94699 **107.00** 4.0 200
39.37 (1000) 95165 **221.00** 4.0 200

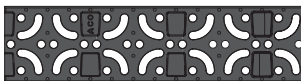


Type 220 Galvanized slotted
Type 250 Stainless slotted

39.37 (1000) 95537 **81.00** 4.0 200
39.37 (1000) 95545 **182.00** 4.0 200

DrainLok K50/KS50 grates

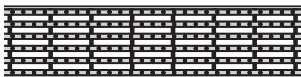
LOAD CLASS A - EN 1433 - 3,372 LBS - 70 PSI



Type 200D Plastic mosaic black
Type 201D Plastic mosaic gray
Type 202D Plastic mosaic tan

19.69 (500) 138104 **27.00** 0.7 900
19.69 (500) 138105 **31.00** 0.7 900
19.69 (500) 138106 **31.00** 0.7 900

LOAD CLASS B - EN 1433 - 28,101 LBS - 580 PSI



Type 247D Stainless longitudinal

39.37 (1000) 142436 **630.00** 5.9 200

LOAD CLASS C - EN 1433 - 56,202 LBS - 1,160 PSI



Type 276D Ductile iron longitudinal

19.69 (500) 138107 **70.00** 7.3 260

LOAD CLASS C - EN 1433 - 56,202 LBS - 1,160 PSI



Brickslot 100 - for K100/KS100

	Part No.	Price \$	Weight lbs	Pallet Qty
Type 441 Galvanized steel Brickslot - 39.37" (1 m)	138040	219.00	17.6	84
Type 442 Galvanized steel Brickslot - 19.69" (0.5 m)	138041	161.00	9.0	128
Type 482 Galvanized steel Brickslot access unit - 19.69" (0.5 m)	138042	327.00	16.4	50
Type 443 Stainless steel Brickslot - 39.37" (1 m)	138045	437.00	17.6	150
Type 444 Stainless steel Brickslot - 19.69" (0.5 m)	138046	264.00	9.0	200
Type 484 Stainless steel Brickslot access unit - 19.69" (0.5 m)	138047	616.00	16.4	50

- K100/KS100 channels apply (page 1).
- H100-8, H100-10, H100K-8, and H100KS-8 channels apply (page 14).

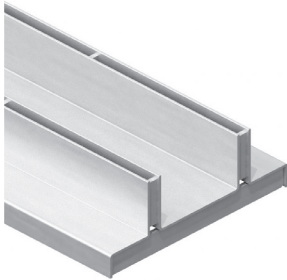


Heel-resistant Brickslot 100 - for K100/KS100

Type 470 Galvanized steel Brickslot - 39.37" (1 m)	138050	248.00	18.0	84
Type 471 Galvanized steel Brickslot - 19.69" (0.5 m)	138051	168.00	9.2	128
Type 483 Galvanized steel Brickslot access unit - 19.69" (0.5 m)	138052	342.00	11.0	50
Type 472 Stainless steel Brickslot - 39.37" (1 m)	138055	449.00	18.0	150
Type 473 Stainless steel Brickslot - 19.69" (0.5 m)	138056	264.00	9.2	200
Type 485 Stainless steel Brickslot access unit - 19.69" (0.5 m)	138057	616.00	11.0	50

- K100/KS100 channels apply (page 1).
- H100-8, H100-10, H100K-8, and H100KS-8 channels apply (page 14).

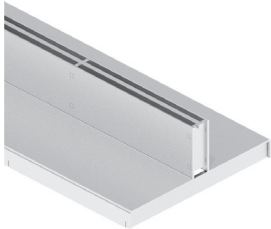
LOAD CLASS C - EN 1433 - 56,202 LBS - 774 PSI



Twinslot 200 - for K200/KS200

Type 641 Galvanized steel Brickslot - 39.37" (1 m)	138060	368.00	36.3	36
Type 642 Galvanized steel Brickslot - 19.69" (0.5 m)	138061	298.00	18.7	72
Type 682 Galvanized steel Brickslot access unit - 19.69" (0.5 m)	138062	602.00	32.4	25
Type 643 Stainless steel Brickslot - 39.37" (1 m)	138065	783.00	36.3	75
Type 644 Stainless steel Brickslot - 19.69" (0.5 m)	138066	589.00	18.7	100
Type 684 Stainless steel Brickslot access unit - 19.69" (0.5 m)	138067	952.00	32.4	25

- K200/KS200 channels apply (page 3).
- H200K-13 and H200KS-13 channels apply (page 14).



Heel Resistant Brickslot 200 - for K200/KS200

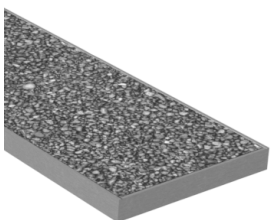
Type 670 Galvanized steel Brickslot - 39.37" (1 m)	138070	381.00	28.2	24
Type 672 Galvanized steel Brickslot - 19.69" (0.5 m)	138071	298.00	14.5	56
Type 683 Galvanized steel Brickslot access unit - 19.69" (0.5 m)	138072	602.00	29.0	25
Type 673 Stainless steel Brickslot - 39.37" (1 m)	138075	783.00	28.2	75
Type 674 Stainless steel Brickslot - 19.69" (0.5 m)	138076	561.00	14.5	100
Type 685 Stainless steel Brickslot access unit - 19.69" (0.5 m)	138077	946.00	29.0	25

- K200/KS200 channels apply (page 3).
- H200K-13 and H200KS-13 channels apply (page 14).

Brickslot Accessories

Grate removal tool for access unit	01318	36.00	0.3	-
------------------------------------	-------	--------------	-----	---

LOAD CLASS B - EN 1433 - 28,101 LBS - 387 PSI

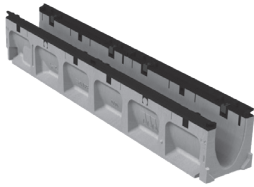


EcoPanel	Standard Unit			Access Unit		
	Part No.	Price \$	Pallet Qty	Part No.	Price \$	Weight lbs
Black Granite	142742	1,070.00	16	142743	1,070.00	50.7
Blue Marble	142744	1,070.00	16	142745	1,070.00	50.7
Silver Marble	142746	1,070.00	16	142747	1,070.00	50.7
Starlight Granite	142748	1,070.00	16	142749	1,070.00	50.7
Sand Marble	142750	1,070.00	16	142751	1,070.00	50.7
Gray Marble	142754	1,070.00	16	142755	1,070.00	50.7
Lifting Key	-	-	-	84306	25.00	-

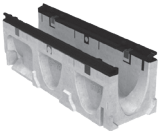
- EcoPanel covers are made of galvanized steel frames with resin-bonded aggregate installed.
- K200/KS200 channels apply (page 3).
- H200 channels apply (page 14).

PowerDrain® S100K Parts Table

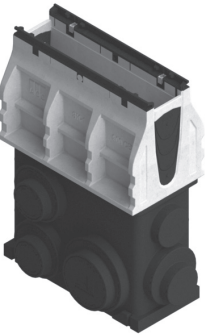
S100K Channel -
39.37" (1 m)



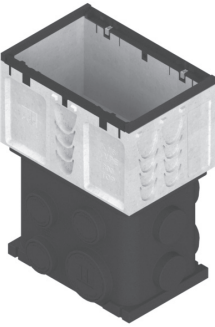
S100K Channel -
19.69" (0.5 m)



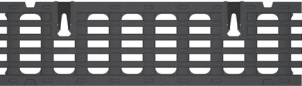
SK1-901D In-line Catch Basin



SK1-621D Style Catch Basin



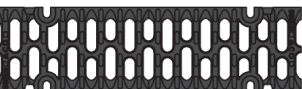
SK1 Ductile Iron
Longitudinal Grate



SK1 Ductile Iron Slotted Grate



SK1 Ductile Iron 4-bolt Grate*



*includes 4 qty M10 bolts

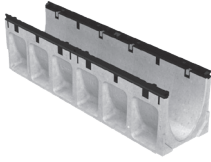
Part No.	Price \$	Weight lbs	Pallet Qty
SK1-00 Constant depth channel - 39.37" (1 m) ¹	67041	285.00	48.1 28
SK1-1 Sloped channel - 39.37" (1 m)	67001	285.00	48.1 28
SK1-2 Sloped channel - 39.37" (1 m)	67002	285.00	49.1 28
SK1-3 Sloped channel - 39.37" (1 m)	67003	285.00	50.1 28
SK1-4 Sloped channel - 39.37" (1 m)	67004	285.00	51.1 28
SK1-5 Sloped channel - 39.37" (1 m) ¹	67005	285.00	52.1 28
SK1-6 Sloped channel - 39.37" (1 m)	67006	285.00	53.1 28
SK1-7 Sloped channel - 39.37" (1 m)	67007	285.00	54.1 28
SK1-8 Sloped channel - 39.37" (1 m)	67008	285.00	55.1 28
SK1-9 Sloped channel - 39.37" (1 m)	67009	285.00	56.1 28
SK1-10 Sloped channel - 39.37" (1 m) ¹	67010	285.00	57.1 28
SK1-010 Constant depth channel - 39.37" (1 m)	67043	285.00	57.1 28
SK1-0103 Constant depth channel - 19.69" (0.5 m) ¹	67044	195.00	29.4 56
SK1-11 Sloped channel - 39.37" (1 m)	67011	285.00	58.1 28
SK1-12 Sloped channel - 39.37" (1 m)	67012	285.00	59.1 28
SK1-13 Sloped channel - 39.37" (1 m)	67013	285.00	60.1 28
SK1-14 Sloped channel - 39.37" (1 m)	67014	285.00	61.1 28
SK1-15 Sloped channel - 39.37" (1 m) ¹	67015	285.00	62.1 28
SK1-16 Sloped channel - 39.37" (1 m)	67016	285.00	63.1 28
SK1-17 Sloped channel - 39.37" (1 m)	67017	285.00	64.1 28
SK1-18 Sloped channel - 39.37" (1 m)	67018	285.00	65.1 28
SK1-19 Sloped channel - 39.37" (1 m)	67019	285.00	66.1 28
SK1-20 Sloped channel - 39.37" (1 m) ¹	67020	285.00	67.1 28
SK1-020 Constant depth channel - 39.37" (1 m) ¹	67045	285.00	67.1 28
SK1-0203 Constant depth channel - 19.69" (0.5 m) ¹	67046	195.00	33.9 56
SK1-21 Sloped channel - 39.37" (1 m)	67021	285.00	68.1 21
SK1-22 Sloped channel - 39.37" (1 m)	67022	285.00	69.1 21
SK1-23 Sloped channel - 39.37" (1 m)	67023	285.00	70.0 21
SK1-24 Sloped channel - 39.37" (1 m)	67024	285.00	71.0 21
SK1-25 Sloped channel - 39.37" (1 m) ¹	67025	285.00	72.0 21
SK1-26 Sloped channel - 39.37" (1 m)	67026	285.00	73.0 21
SK1-27 Sloped channel - 39.37" (1 m)	67027	285.00	74.0 21
SK1-28 Sloped channel - 39.37" (1 m)	67028	285.00	75.0 21
SK1-29 Sloped channel - 39.37" (1 m)	67029	285.00	76.0 21
SK1-30 Sloped channel - 39.37" (1 m) ¹	67030	285.00	77.0 21
SK1-030 Constant depth channel - 39.37" (1 m) ¹	67047	285.00	77.0 21
SK1-0303 Constant depth channel - 19.69" (0.5 m) ¹	67048	195.00	38.4 42
SK1-31 Sloped channel - 39.37" (1 m)	67031	285.00	78.0 21
SK1-32 Sloped channel - 39.37" (1 m)	67032	285.00	79.0 21
SK1-33 Sloped channel - 39.37" (1 m)	67033	285.00	80.0 21
SK1-34 Sloped channel - 39.37" (1 m)	67034	285.00	81.0 21
SK1-35 Sloped channel - 39.37" (1 m) ¹	67035	285.00	82.0 21
SK1-36 Sloped channel - 39.37" (1 m)	67036	285.00	83.0 21
SK1-37 Sloped channel - 39.37" (1 m)	67037	285.00	84.0 21
SK1-38 Sloped channel - 39.37" (1 m)	67038	285.00	85.0 21
SK1-39 Sloped channel - 39.37" (1 m)	67039	285.00	86.0 21
SK1-40 Sloped channel - 39.37" (1 m) ¹	67040	285.00	87.0 21
SK1-040 Constant depth channel - 39.37" (1 m)	67049	285.00	87.0 21
SK1-0403 Constant depth channel - 19.69" (0.5 m) ¹	67050	195.00	43.0 42
SK1-901D In-line catch basin - 19.69" (0.5 m) ^{2,4}	67051	580.00	86.0 6
SK1-906D In-line catch basin - 19.69" (0.5 m) ^{4,5}	97939	607.00	131.3 6
SK1-621D catch basin - 19.69" (0.5 m) ^{2,4}	67053	794.00	75.7 6
SK1-622D catch basin - 19.69" (0.5 m) ^{4,5}	97921	679.00	185.5 6
SK1-631D catch basin - 19.69" (0.5 m) ^{3,4}	67054	912.00	85.7 6
SK1-632D catch basin - 19.69" (0.5 m) ^{4,6}	97931	896.00	231.0 6
Series 611 catch basin riser polymer (optional)	91110	239.00	45.0 24
Series 600 catch basin riser plastic (optional)	99902	208.00	10.0 24
Foul air trap - fits Type 900 & 600 basins	90854	87.00	1.2 -
SK1-304-6 6" Inlet cap	96861	86.00	6.2 -
SK1-308-6 6" Outlet end cap	96862	86.00	6.0 -
SK1-404-6 6" Inlet end cap	96863	86.00	7.2 -
SK1-408-6 6" Outlet end cap	96864	86.00	7.0 -
SK1 Universal inlet/outlet/end cap	96824	21.00	0.4 -
Debris strainer for 4" bottom knockout	93488	63.00	0.2 -
Outlet adapter - 4" oval to 6" round	95140	26.00	1.1 -
Installation device - 4" system	97477	36.00	2.8 -
Grate removal tool	01318	36.00	0.3 -
SK1 Ductile iron longitudinal grate - 19.69" (0.5 m) (Load Class F)	96096	106.00	13.9 200
SK1 Ductile iron slotted grate - 19.69" (0.5 m) (Load Class F)	96082	78.00	12.9 200
SK1 Ductile iron 4-bolt iron grate - 19.69" (0.5 m) (Load Class F)	99590	106.00	10.8 140
Replacement bolt for 4-bolt grate	95526	4.20	0.1 -
Tamper-resistant bolt for 4-bolt grate	138127	16.00	0.1 -
Tamper-resistant bolt driver	138128	150.00	0.1 -
PowerLok® safety clip	10443	4.20	0.1 -
PowerDrain® concrete anchors (2 per bag)	97496	35.00	0.3 -

Notes

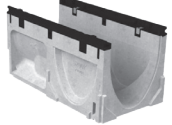
1. This channel features 4" & 6" bottom knockouts.
2. Catch basin assembly: Polymer concrete top, blanking end kit, trash bucket and plastic base. Select grate to suit.
3. Catch basin assembly: Polymer concrete top, blanking end kit, deep trash bucket, riser and plastic base. Select grate to suit.
4. For series 900 select grate from above options. For series 600 see page 11.
5. Catch basin assembly: Polymer concrete top, blanking end kit, trash bucket and polymer base. Select grate to suit.
6. Catch basin assembly: Polymer concrete top, blanking end kit, deep trash bucket, riser and polymer base. Select grate to suit.

PowerDrain® S200K Parts Table

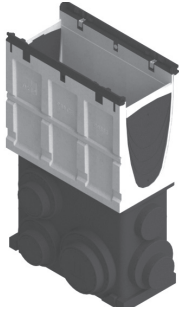
S200K Channel -
39.37" (1 m)



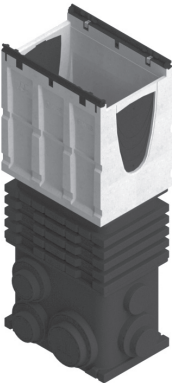
S200K Channel -
19.69" (0.5 m)



SK2-902D In-line Catch Basin



SK2-631D Style Catch Basin



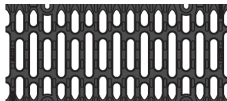
SK2 Ductile Iron
Longitudinal Grate



SK2 Ductile Iron Slotted Grate



SK2 Ductile Iron 4-bolt Grate*



*includes 4 qty M10 bolts

Part No.	Price \$	Weight lbs	Pallet Qty
SK2-00 Constant depth channel - 39.37" (1 m) ¹	68041	438.00	85.2 16
SK2-1 Sloped channel - 39.37" (1 m)	68001	438.00	85.2 16
SK2-2 Sloped channel - 39.37" (1 m)	68002	438.00	86.3 16
SK2-3 Sloped channel - 39.37" (1 m)	68003	438.00	87.4 16
SK2-4 Sloped channel - 39.37" (1 m)	68004	438.00	88.5 16
SK2-5 Sloped channel - 39.37" (1 m) ¹	68005	438.00	89.6 16
SK2-6 Sloped channel - 39.37" (1 m)	68006	438.00	90.7 16
SK2-7 Sloped channel - 39.37" (1 m)	68007	438.00	91.8 16
SK2-8 Sloped channel - 39.37" (1 m)	68008	438.00	92.9 16
SK2-9 Sloped channel - 39.37" (1 m)	68009	438.00	94.0 16
SK2-10 Sloped channel - 39.37" (1 m) ¹	68010	438.00	95.1 16
SK2-010 Constant depth channel - 39.37" (1 m) ¹	68043	438.00	95.2 16
SK2-0103 Constant depth channel - 19.69" (0.5 m) ¹	68044	355.00	61.2 24
SK2-11 Sloped channel - 39.37" (1 m)	68011	438.00	96.2 12
SK2-12 Sloped channel - 39.37" (1 m)	68012	438.00	97.3 12
SK2-13 Sloped channel - 39.37" (1 m)	68013	438.00	98.4 12
SK2-14 Sloped channel - 39.37" (1 m)	68014	438.00	99.6 12
SK2-15 Sloped channel - 39.37" (1 m) ¹	68015	438.00	100.7 12
SK2-16 Sloped channel - 39.37" (1 m)	68016	438.00	101.8 12
SK2-17 Sloped channel - 39.37" (1 m)	68017	438.00	102.9 12
SK2-18 Sloped channel - 39.37" (1 m)	68018	438.00	104.0 12
SK2-19 Sloped channel - 39.37" (1 m)	68019	438.00	105.1 12
SK2-20 Sloped channel - 39.37" (1 m) ¹	68020	438.00	106.2 12
SK2-020 Constant depth channel - 39.37" (1 m) ¹	68045	438.00	106.2 12
SK2-0203 Constant depth channel - 19.69" (0.5 m) ¹	68046	355.00	68.8 24
SK2-21 Sloped channel - 39.37" (1 m)	68021	438.00	107.3 12
SK2-22 Sloped channel - 39.37" (1 m)	68022	438.00	108.4 12
SK2-23 Sloped channel - 39.37" (1 m)	68023	438.00	109.5 12
SK2-24 Sloped channel - 39.37" (1 m)	68024	438.00	110.6 12
SK2-25 Sloped channel - 39.37" (1 m) ¹	68025	438.00	111.7 12
SK2-26 Sloped channel - 39.37" (1 m)	68026	438.00	112.3 12
SK2-27 Sloped channel - 39.37" (1 m)	68027	438.00	113.9 12
SK2-28 Sloped channel - 39.37" (1 m)	68028	438.00	115.8 12
SK2-29 Sloped channel - 39.37" (1 m)	68029	438.00	116.1 12
SK2-30 Sloped channel - 39.37" (1 m) ¹	68030	438.00	117.2 12
SK2-030 Constant depth channel - 39.37" (1 m) ¹	68047	438.00	117.2 12
SK2-0303 Constant depth channel - 19.69" (0.5 m) ¹	68048	355.00	73.3 24
SK2-31 Sloped channel - 39.37" (1 m)	68031	438.00	118.4 12
SK2-32 Sloped channel - 39.37" (1 m)	68032	438.00	119.5 12
SK2-33 Sloped channel - 39.37" (1 m)	68033	438.00	120.6 12
SK2-34 Sloped channel - 39.37" (1 m)	68034	438.00	121.7 12
SK2-35 Sloped channel - 39.37" (1 m) ¹	68035	438.00	122.8 12
SK2-36 Sloped channel - 39.37" (1 m)	68036	438.00	123.9 12
SK2-37 Sloped channel - 39.37" (1 m)	68037	438.00	125.0 12
SK2-38 Sloped channel - 39.37" (1 m)	68038	438.00	126.1 12
SK2-39 Sloped channel - 39.37" (1 m)	68039	438.00	127.2 12
SK2-40 Sloped channel - 39.37" (1 m) ¹	68040	438.00	128.3 12
SK2-040 Constant depth channel - 39.37" (1 m) ¹	68049	438.00	128.3 12
SK2-0403 Constant depth channel - 19.69" (0.5 m) ¹	68050	355.00	82.1 24
SK2-902D In-line catch basin - 19.69" (0.5 m) ^{2,4}	68053	602.00	81.8 6
SK2-906D In-line catch basin - 19.69" (0.5 m) ^{4,5}	97940	685.00	132.3 6
SK2-621D catch basin - 19.69" (0.5 m) ^{2,4}	68055	796.00	116.0 6
SK2-622D catch basin - 19.69" (0.5 m) ^{4,5}	97923	1,045.00	169.0 6
SK2-631D catch basin - 19.69" (0.5 m) ^{3,4}	68056	933.00	126.0 6
SK2-632D catch basin - 19.69" (0.5 m) ^{4,6}	97932	979.00	214.5 6
Series 611 catch basin riser polymer (optional)	91110	239.00	45.0 24
Series 600 catch basin riser plastic (optional)	99902	208.00	10.0 24
Foul air trap - fits Type 900 & 600 basins	90854	87.00	1.2 -
SK2 Universal inlet/outlet/end cap	96823	69.00	1.4 -
Debris strainer for 4" bottom knockout	93488	63.00	0.2 -
Installation device - 8" system	97478	37.00	4.0 -
Grate removal tool	01318	36.00	0.3 -
SK2 Ductile iron longitudinal grate - 19.69" (0.5 m) (Load Class E)	72263	211.00	26.2 64
SK2 Ductile iron slotted grate - 19.69" (0.5 m) (Load Class F)	02449	183.00	32.0 80
SK2 Ductile iron 4-bolt grate - 19.69" (0.5 m) (Load Class F)	99591	221.00	26.5 80
Replacement bolt for 4-bolt grate	95526	4.20	0.1 -
Tamper-resistant bolt for 4-bolt grate	138127	16.00	0.1 -
Tamper-resistant bolt driver	138128	150.00	0.1 -
PowerLok® safety clip	10443	4.20	0.1 -
PowerDrain® concrete anchors (2 per bag)	97496	35.00	0.3 -

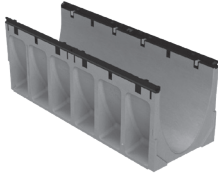
Notes

1. This channel features bottom knockouts; 4" & 6" for 200mm wide channels.
2. Catch basin assembly: Polymer concrete top, blanking end kit, trash bucket and plastic base. Select grate to suit.
3. Catch basin assembly: Polymer concrete top, blanking end kit, deep trash bucket, riser and plastic base. Select grate to suit.
4. For series 900 select grate from above options. For series 600 see page 11.
5. Catch basin assembly: Polymer concrete top, blanking end kit, trash bucket and polymer base. Select grate to suit.
6. Catch basin assembly: Polymer concrete top, blanking end kit, deep trash bucket, riser and polymer base. Select grate to suit.

(888) 490-9552

www.acoswm.com/drain

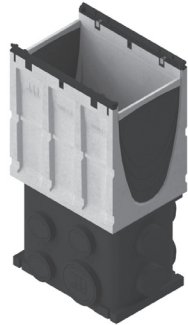
S300K Channel -
39.37" (1 m)



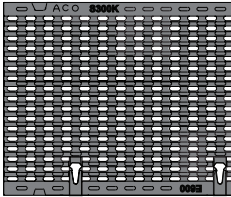
S300K Channel -
19.69" (0.5 m)



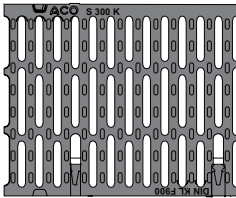
SK3-903D In-line Catch Basin



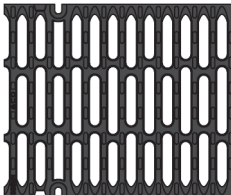
SK3 Ductile Iron
Longitudinal Grate



SK3 Ductile Iron
Slotted Grate



SK3 Ductile Iron
4-bolt Grate*



*includes 4 qty M10 bolts

PowerDrain® S300K Parts Table

	Part No.	Price \$	Weight lbs	Pallet Qty
SK3-00 Constant depth channel - 39.37" (1 m) ¹	69041	653.00	140.0	9
SK3-1 Sloped channel - 39.37" (1 m)	69001	653.00	140.0	9
SK3-2 Sloped channel - 39.37" (1 m)	69002	653.00	141.3	9
SK3-3 Sloped channel - 39.37" (1 m)	69003	653.00	142.8	9
SK3-4 Sloped channel - 39.37" (1 m)	69004	653.00	144.1	9
SK3-5 Sloped channel - 39.37" (1 m) ¹	69005	653.00	145.4	9
SK3-6 Sloped channel - 39.37" (1 m)	69006	653.00	146.9	9
SK3-7 Sloped channel - 39.37" (1 m)	69007	653.00	148.2	9
SK3-8 Sloped channel - 39.37" (1 m)	69008	653.00	149.5	9
SK3-9 Sloped channel - 39.37" (1 m)	69009	653.00	150.9	9
SK3-10 Sloped channel - 39.37" (1 m) ¹	69010	653.00	152.3	9
SK3-010 Constant depth channel - 39.37" (1 m) ¹	69042	653.00	152.3	9
SK3-0103 Constant depth channel - 19.69" (0.5 m) ¹	69045	406.00	84.2	18
SK3-11 Sloped channel - 39.37" (1 m)	69011	653.00	153.6	9
SK3-12 Sloped channel - 39.37" (1 m)	69012	653.00	155.0	9
SK3-13 Sloped channel - 39.37" (1 m)	69013	653.00	156.4	9
SK3-14 Sloped channel - 39.37" (1 m)	69014	653.00	157.7	9
SK3-15 Sloped channel - 39.37" (1 m) ¹	69015	653.00	159.1	9
SK3-16 Sloped channel - 39.37" (1 m)	69016	653.00	160.5	9
SK3-17 Sloped channel - 39.37" (1 m)	69017	653.00	161.9	9
SK3-18 Sloped channel - 39.37" (1 m)	69018	653.00	163.2	9
SK3-19 Sloped channel - 39.37" (1 m)	69019	653.00	164.6	9
SK3-20 Sloped channel - 39.37" (1 m) ¹	69020	653.00	166.0	9
SK3-020 Constant depth channel - 39.37" (1 m) ¹	69044	653.00	166.0	9
SK3-0203 Constant depth channel - 19.69" (0.5 m) ¹	69047	406.00	92.0	18
SK3-21 Sloped channel - 39.37" (1 m)	69021	653.00	167.3	9
SK3-22 Sloped channel - 39.37" (1 m)	69022	653.00	168.7	9
SK3-23 Sloped channel - 39.37" (1 m)	69023	653.00	170.1	9
SK3-24 Sloped channel - 39.37" (1 m)	69024	653.00	171.4	9
SK3-25 Sloped channel - 39.37" (1 m) ¹	69025	653.00	172.7	9
SK3-26 Sloped channel - 39.37" (1 m)	69026	653.00	174.2	9
SK3-27 Sloped channel - 39.37" (1 m)	69027	653.00	175.5	9
SK3-28 Sloped channel - 39.37" (1 m)	69028	653.00	176.8	9
SK3-29 Sloped channel - 39.37" (1 m)	69029	653.00	178.3	9
SK3-30 Sloped channel - 39.37" (1 m) ¹	69030	653.00	179.6	9
SK3-030 Constant depth channel - 39.37" (1 m) ¹	69046	653.00	179.6	9
SK3-0303 Constant depth channel - 19.69" (0.5 m) ¹	69049	406.00	100.0	18
SK3-31 Sloped channel - 39.37" (1 m)	69031	653.00	180.9	9
SK3-32 Sloped channel - 39.37" (1 m)	69032	653.00	182.4	9
SK3-33 Sloped channel - 39.37" (1 m)	69033	653.00	183.7	9
SK3-34 Sloped channel - 39.37" (1 m)	69034	653.00	185.0	9
SK3-35 Sloped channel - 39.37" (1 m) ¹	69035	653.00	186.5	9
SK3-36 Sloped channel - 39.37" (1 m)	69036	653.00	187.7	9
SK3-37 Sloped channel - 39.37" (1 m)	69037	653.00	189.1	9
SK3-38 Sloped channel - 39.37" (1 m)	69038	653.00	190.5	9
SK3-39 Sloped channel - 39.37" (1 m)	69039	653.00	191.9	9
SK3-40 Sloped channel - 39.37" (1 m) ¹	69040	653.00	193.2	9
SK3-040 Constant depth channel - 39.37" (1 m) ¹	69048	653.00	193.2	9
SK3-0403 Constant depth channel - 19.69" (0.5 m) ¹	69050	406.00	109.0	18
SK3-903D In-line catch basin - 19.69" (0.5 m) ^{2,4}	69053	823.00	99.4	6
SK3-907D In-line catch basin - 19.69" (0.5 m) ^{4,5}	97924	1,045.00	158.4	6
SK3-904D In-line catch basin - 19.69" (0.5 m) ^{3,4}	69054	933.00	104.4	6
SK3-908D In-line catch basin - 19.69" (0.5 m) ^{4,6}	97933	1,238.00	203.4	6
Series 611 catch basin riser polymer (optional)	91110	239.00	45.00	24
Series 600 catch basin riser plastic (optional)	99902	208.00	10.0	24
Foul air trap - fits Type 900 & 600 basins	90854	87.00	1.2	-
SK3 Universal inlet/outlet/end cap	96827	112.00	2.5	-
Installation device - 12" system	97479	39.00	4.9	-
Grate removal tool	01318	36.00	0.3	-
SK3 Ductile iron longitudinal grate - 19.69" (0.5 m) (Load Class E)	96833	386.00	62.5	36
SK3 Ductile iron slotted grate - 19.69" (0.5 m) (Load Class F)	02445	276.00	55.0	48
SK3 Ductile iron 4-bolt grate - 19.69" (0.5 m) (Load Class F)	99592	400.00	55.3	36
Replacement bolt for 4-bolt grate	95526	4.20	0.1	-
Tamper-resistant bolt for 4-bolt grate	138127	16.00	0.1	-
Tamper-resistant bolt driver	138128	150.00	0.1	-
PowerLok® safety clip	10443	4.20	0.1	-
PowerDrain® concrete anchors (2 per bag)	97496	35.00	0.3	-

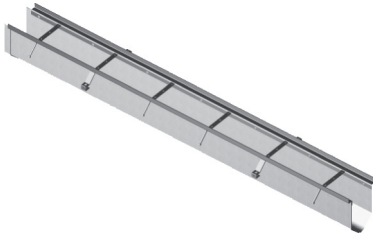
Notes

- This channel features 6" & 8" bottom knockouts.
- Catch basin assembly: Polymer concrete top, blanking end kit, trash bucket and plastic base. Select grate to suit.
- Catch basin assembly: Polymer concrete top, blanking end kit, deep trash bucket, riser and plastic base. Select grate to suit.
- For series 900 select grate from above options.
- Catch basin assembly: Polymer concrete top, blanking end kit, trash bucket and polymer base. Select grate to suit.
- Catch basin assembly: Polymer concrete top, blanking end kit, deep trash bucket, riser and polymer base. Select grate to suit.

FlowDrain FG200 Parts Table

	Part No.	Price \$	Weight lbs
F801 Sloped channel - 108" (2.75 m)	99006	730.00	11.0
F802 Sloped channel - 108" (2.75 m)	99013	730.00	12.0
F803 Sloped channel - 108" (2.75 m)	99021	730.00	13.0
F803N Constant depth channel - 108" (2.75 m)	99048	730.00	15.5
F803N3 Constant depth channel - 36" (0.915 m)	99034	331.00	5.2
F804 Sloped channel - 108" (2.75 m)	99055	730.00	14.1
F805 Sloped channel - 108" (2.75 m)	99062	730.00	15.2
F806 Sloped channel - 108" (2.75 m)	99071	730.00	16.3
F806N Constant depth channel - 108" (2.75 m)	99095	730.00	16.3
F806N3 Constant depth channel - 36" (0.915 m)	99084	331.00	5.5
F807 Sloped channel - 108" (2.75 m)	99109	730.00	17.4
F808 Sloped channel - 108" (2.75 m)	99116	730.00	18.5
F809 Sloped channel - 108" (2.75 m)	99123	730.00	19.6
F809N Constant depth channel - 108" (2.75 m)	99145	730.00	19.6
F809N3 Constant depth channel - 36" (0.915 m)	99132	331.00	6.5
F810 Sloped channel - 108" (2.75 m)	99156	730.00	20.7
F811 Sloped channel - 108" (2.75 m)	99162	730.00	21.8
F812 Sloped channel - 108" (2.75 m)	99175	730.00	23.0
F812N Constant depth channel - 108" (2.75 m)	99192	730.00	23.0
F812N3 Constant depth channel - 36" (0.915 m)	99186	331.00	7.7
Black coated steel frame - 108" (2.75 m)	97066	449.00	57.9
Black coated steel frame - 36" (0.915 m)	35916	176.00	19.3
Galvanized steel frame - 108" (2.75 m)	97079	532.00	57.9
Galvanized steel frame - 36" (0.915 m)	98538	204.00	19.3
Stainless steel frame - 108" (2.75 m)	97087	1,397.00	57.9
Stainless steel frame - 36" (0.915 m)	98545	511.00	19.3
Closing cap (Female) with black end frame	98365	112.00	1.1
Closing cap (Female) with galvanized steel end frame	98386	112.00	1.1
Closing cap (Female) with stainless steel end frame	98375	123.00	1.1
Closing cap (Male) with black end frame	98363	112.00	1.3
Closing cap (Male) with galvanized steel end frame	98382	112.00	1.3
Closing cap (Male) with stainless steel end frame	98372	123.00	1.3
Outlet cap (Male) with black end frame	98361	112.00	1.8
Outlet cap (Male) with galvanized steel end frame	98381	112.00	1.8
Outlet cap (Male) with stainless steel end frame	98373	123.00	1.8
Vertical outlet adapter - 4", 6" or 8" outlet	98103	106.00	1.6
FG200 channel/catch basin adapter	98171	106.00	1.1
F660 Catch basin - 24" x 12"	98069	551.00	22.0
F660 Black coated steel frame	97995	215.00	13.8
F660 Galvanized steel frame	98008	229.00	14.4
F660 Stainless steel frame	98013	464.00	14.4
F660 Plastic trash bucket	98067	339.00	5.0
F880 Catch basin - 24" x 24"	98075	816.00	22.0
F880 Black coated steel frame	98021	270.00	23.2
F880 Galvanized steel frame	98034	326.00	24.2
F880 Stainless steel frame*	98048	696.00	24.2
F880 Plastic trash bucket	98059	437.00	8.4
4" Pipe plain end adapter	97425	63.00	0.4
6" Pipe plain end adapter	97438	63.00	0.6
8" pipe plain end adapter	97444	63.00	0.9
Replacement galvanized steel socket head bolts (Qty 4) - for bar grate	93895	11.00	0.4
Replacement stainless steel socket head bolts (Qty 4) - for bar grate	93897	15.00	0.4
Replacement stainless steel hex head bolts (Qty 2) - for iron grates	93892	9.00	0.2

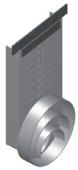
FG200 Channel - 108" (2.75 m)



FG200 Channel - 36" (0.915 m)



Outlet Cap

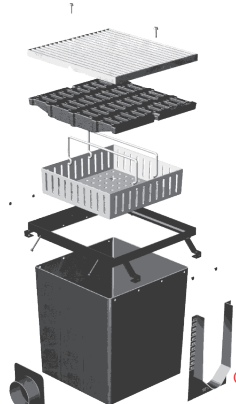


F660 Catch Basin and Accessories



Pipe Adapter

F880 Catch Basin and Accessories



Pipe Adapter

Channel Adapter

Channel Adapter

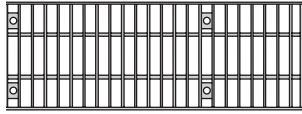
Notes

1. Channel weights are for fiberglass body only - add frame weight for total unit weight.
2. Closing/Outlet caps can be cut down to suit all channels.
3. Frames supplied with plastic snap-fit studs for connecting to fiberglass body.
4. See page 13 for grate details.

FG200 Grates

		Length in	Part No.	Price \$	Weight lbs	Pallet Qty
--	--	--------------	-------------	-------------	---------------	---------------

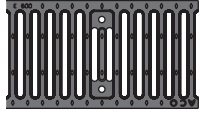
LOAD CLASS C - EN 1433 - 56,202 LBS - 967 PSI



Galvanized steel bar
Stainless steel bar

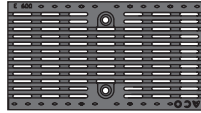
36.0	93899	323.00	28.6	90
36.0	93891	1,218.00	28.6	

LOAD CLASS E - EN 1433 - 134,885 LBS - 2,321 PSI



Ductile iron slotted

18.0	93896	151.00	28.7	80
------	-------	---------------	------	----

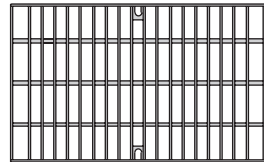


Ductile iron longitudinal

18.0	93893	229.00	25.5	80
------	-------	---------------	------	----

F660 Grates

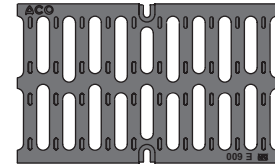
LOAD CLASS C - EN 1433 - 56,202 LBS - 739 PSI



Galvanized steel bar
Stainless steel bar

24.0	97443	433.00	29.0	20
24.0	97442	1,689.00	28.0	

LOAD CLASS E - EN 1433 - 134,885 LBS - 1,773 PSI

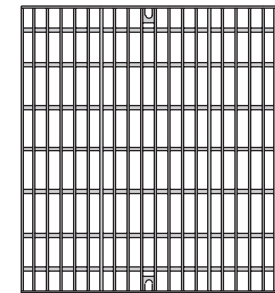


Ductile iron slotted

24.0	97449	532.00	75.0	20
------	-------	---------------	------	----

F880 Grates

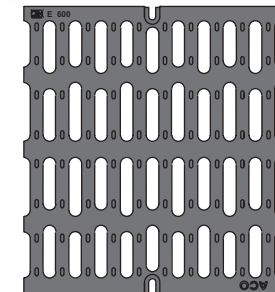
LOAD CLASS C - EN 1433 - 56,202 LBS - 739 PSI



Galvanized steel bar
Stainless steel bar

24.0	97452	630.00	52.0	25
24.0	97455	2,457.00	48.0	

LOAD CLASS E - EN 1433 - 134,885 LBS - 1,773 PSI



Ductile iron slotted

24.0	97453	1,731.00	209.0	10
------	-------	-----------------	-------	----

SlabDrain Parts Table

H100-8, H100-10



Part No.	Price \$	Weight lbs	Pallet Qty	Part No.	Price \$	Weight lbs
H100-8 - No Rail				H100-10 - No Rail		
00985	155.00	20.0	56	00549	155.00	25.0
05935	21.00	1.0	-	05939	21.00	1.0
93488	63.00	0.2	-	93488	63.00	0.2
01318	36.00	0.3	-	01318	36.00	0.3
02899	11.00	0.1	-	02899	11.00	0.1

Note: See K100 QuickLok® grate options - page 2.

H100K-6



H100K-6 - Galvanized				H100KS-6 - Stainless		
141803	146.00	7.6	56	141804	278.00	7.6
141805	22.00	0.1	-	296097	26.00	0.1
93488	63.00	0.1	-	93488	63.00	0.1
01318	36.00	0.1	-	01318	36.00	0.1

Note: See K100 DrainLok grate options - page 2.

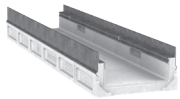
H100K-8



H100K-8 - Galvanized				H100KS-8 - Stainless		
95365	155.00	16.0	56	95373	298.00	16.0
98462	23.00	1.0	-	98471	28.00	1.0
93488	63.00	0.2	-	93488	63.00	0.2
01318	36.00	0.3	-	01318	36.00	0.3
02899	11.00	0.1	-	02899	11.00	0.1

Note: See K100 grate options - page 2.

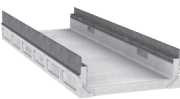
H200K-13



H200K-13 - Galvanized				H200KS-13 - Stainless		
93454	215.00	57.4	20	93455	463.00	57.4
93458	45.00	1.0	-	93459	60.00	1.0
93488	63.00	0.2	-	93488	63.00	0.2
01318	36.00	0.3	-	01318	36.00	0.3
10457	28.00	0.5	-	10457	28.00	0.5

Note: See K200 grate options - page 4.

H300K-13



H300K-13 - Galvanized				H300KS-13 - Stainless		
93464	276.00	71.6	15	93465	552.00	71.6
93468	59.00	1.4	-	93469	65.00	1.4
01318	36.00	0.3	-	01318	36.00	0.3
10458	37.00	0.7	-	10458	37.00	0.7

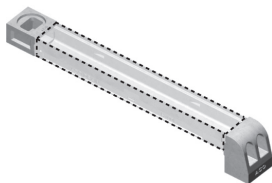
Note: See K300 grate options - pages 6-7.

Membrane No-Hub Drain



Membrane No-Hub Drain - Stainless Steel	01043	464.00	8.9	40
---	-------	---------------	-----	----

Cross Sidewalk Drain (CSD)



	Part No.	Price \$	Weight lbs	Pallet Qty
Down spout pipe inlet	96932	65.00	6.0	-
Curb outlet Type 6	96924	74.00	12.7	-

Note: CSD for use with H100K-8 channel - see above.

H100SK-10



SlabDrain H100SK-10 Ductile Iron Edge

	Part No.	Price \$	Weight lbs	Pallet Qty
Constant depth channel - 39.37" (1 m)	93412	259.00	43.5	28
Closing end cap	93410	36.00	1.0	-
Debris strainer for 4" bottom knockout	93488	63.00	0.2	-
SK1 Iron longitudinal grate - 19.69" (0.5 m) (Load Class F)	96096	106.00	13.9	200
SK1 Iron slotted grate - 19.69" (0.5 m) (Load Class F)	96082	78.00	12.9	200
SK1 Iron 4-bolt grate* - 19.69" (0.5 m) (Load Class F)	99590	106.00	10.8	140

*includes 4 qty M10 bolts.

H200SK-13

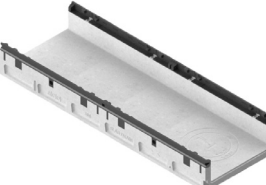


SlabDrain H200SK-13 Ductile Iron Edge

	Part No.	Price \$	Weight lbs	Pallet Qty
Constant depth channel - 39.37" (1 m)	63456	285.00	66.4	18
Closing end cap	93460	62.00	1.0	-
Debris strainer for 4" bottom knockout	93488	63.00	0.2	-
SK2 Iron longitudinal grate - 19.69" (0.5 m) (Load Class E)	72263	211.00	26.2	64
SK2 Iron slotted grate - 19.69" (0.5 m) (Load Class F)	02449	183.00	32.0	80
SK2 Iron 4-bolt grate* - 19.69" (0.5 m) (Load Class F)	99591	221.00	26.5	80

*includes 4 qty M10 bolts.

H300SK-13



SlabDrain H300SK-13 Ductile Iron Edge

	Part No.	Price \$	Weight lbs	Pallet Qty
Constant depth channel - 39.37" (1 m)	63466	312.00	82.2	12
Closing end cap	93470	70.00	1.4	-
SK3 Iron longitudinal - 19.69" (0.5 m) (Load Class E)	96833	386.00	62.5	36
SK3 Iron slotted grate - 19.69" (0.5 m) (Load Class F)	02445	276.00	55.0	48
SK3 Iron 4-bolt grate* - 19.69" (0.5 m) (Load Class F)	99592	400.00	55.3	36

*includes 4 qty M10 bolts.

SK Grate Accessories

	Part No.	Price \$	Weight lbs	Pallet Qty
Grate removal tool	01318	36.00	0.3	-
PowerLok® safety clip (red)	10443	4.20	0.1	-
Tamper resistant bolt for 4-bolt grate	138127	16.00	0.1	-
Tamper resistant bolt driver	138128	150.00	0.1	-
Replacement bolt for 4-bolt grate	95526	4.20	0.1	-

Product Repair Materials

	Part No.	Price \$	Weight lbs	Volume
ACO Seal flexible joint polymer concrete sealant	91120	28.00	1.0	10 oz. tube
ACO Bond polymer concrete repair kit	06519	410.00	11.0	1 gal
ACO Bond polymer concrete repair kit	06516	796.00	55.0	5 gal
ACO fiberglass repair kit	08203	326.00	11.0	1 gal

ACO Terms & Conditions

PAYMENT - All pricing is in U.S. Dollars.

TERMS - Net 30 days from date of invoice. A service charge of 1.5% per month will be charged on all invoices unpaid 30 days after invoice date (equal to 18% annually).

FREIGHT - F.O.B. ACO

PRODUCT AVAILABILITY - Call Customer Service for current stock availability and lead times.

MISSING MATERIAL - Missing material must be reported to ACO's Customer Service Department within 48 hours of receipt of shipment.

DAMAGED MATERIAL - Damaged material must be noted on the bill of lading at final destination point. The receiver must file a freight claim with the carrier. ACO is not responsible for material damaged in transit.

TAXES - All State and Federal taxes are additional.

CHANGES - ACO, Inc. reserves the right to change prices, design, and materials of any products listed at any time.

RETURNS - Returned materials are subject to a 25% restocking charge. Prior return authorization (RGA) must be obtained from ACO before any material is shipped. Returned materials are subject to the following conditions:

- Items returned in a condition that does not allow for refurbish and resale will not be credited.
- Material must be returned to ACO within 30 days of receipt of RGA.
- All freight costs are the responsibility of those returning the material.
- All non-standard and fabricated material cannot be returned for credit.

MINIMUM ORDER - Minimum order is \$250.00. Orders under \$250.00 are subject to a \$50.00 handling fee.



Full ACO, Inc. Terms
and Conditions of Sale

© January 2025 ACO, Inc.
Print DR_PL2025STP_01

ACO, Inc.

Tel: (888) 490-9552
Fax: (520) 421-9899

West Sales Office
825 W. Beechcraft Street
Casa Grande, AZ 85122

Northeast Sales Office
9470 Pinecone Drive
Mentor, OH 44060

Southeast Sales Office
481 Munn Road
Suite 225
Fort Mill, SC 29715

info@acousa.com
www.acoswm.com

