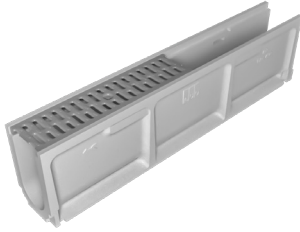


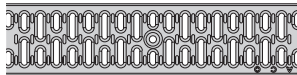
Type 4010 Constant Depth Channel - 39.37" (1 m)



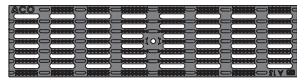
System 4000 Parts

	Part No.	Price \$	Weight lbs	Pallet Qty
Type 4002 Constant Depth Channel - 39.37" (1 m)	06562	45.25	32.9	28
Type 4000-1 Sloped Channel - 39.37" (1 m)	138001	64.50	32.0	28
Type 4000-2 Sloped Channel - 39.37" (1 m)	138002	64.50	32.9	28
Type 4000-3 Sloped Channel - 39.37" (1 m)	138003	64.50	33.8	28
Type 4000-4 Sloped Channel - 39.37" (1 m)	138004	64.50	34.7	28
Type 4000-5 Sloped Channel - 39.37" (1 m)	138005	64.50	35.6	28
Type 4000-6 Sloped Channel - 39.37" (1 m)	138006	64.50	36.5	28
Type 4000-7 Sloped Channel - 39.37" (1 m)	138007	64.50	37.4	28
Type 4000-8 Sloped Channel - 39.37" (1 m)	138008	64.50	38.3	28
Type 4000-9 Sloped Channel - 39.37" (1 m)	138009	64.50	39.2	28
Type 4010 Constant Depth Channel - 39.37" (1 m)	06561	51.75	40.1	28
Type 4000-0103 Constant Depth Channel - 19.69" (0.5 m) ¹	138033	34.50	23.0	56
Type 4000-10 Sloped Channel - 39.37" (1 m)	138010	64.50	40.1	28
Type 4000-11 Sloped Channel - 39.37" (1 m)	138011	64.50	41.0	28
Type 4000-12 Sloped Channel - 39.37" (1 m)	138012	64.50	41.9	28
Type 4000-13 Sloped Channel - 39.37" (1 m)	138013	64.50	42.8	28
Type 4000-14 Sloped Channel - 39.37" (1 m)	138014	64.50	43.7	28
Type 4000-15 Sloped Channel - 39.37" (1 m)	138015	64.50	44.6	28
Type 4000-16 Sloped Channel - 39.37" (1 m)	138016	64.50	45.5	28
Type 4000-17 Sloped Channel - 39.37" (1 m)	138017	64.50	46.4	28
Type 4000-18 Sloped Channel - 39.37" (1 m)	138018	64.50	47.3	28
Type 4000-19 Sloped Channel - 39.37" (1 m)	138019	64.50	48.2	28
Type 4020 Constant Depth Channel - 39.37" (1 m)	06563	64.50	49.1	28
Type 4000-0203 Constant Depth Channel - 19.69" (0.5 m) ¹	138035	34.50	26.0	56
Type 4000-20 Sloped Channel - 39.37" (1 m)	138020	64.50	49.1	28
Type 4000-21 Sloped Channel - 39.37" (1 m)	138021	64.50	50.0	28
Type 4000-22 Sloped Channel - 39.37" (1 m)	138022	64.50	50.9	28
Type 4000-23 Sloped Channel - 39.37" (1 m)	138023	64.50	51.8	28
Type 4000-24 Sloped Channel - 39.37" (1 m)	138024	64.50	52.7	28
Type 4000-25 Sloped Channel - 39.37" (1 m)	138025	64.50	53.6	28
Type 4000-26 Sloped Channel - 39.37" (1 m)	138026	64.50	54.5	28
Type 4000-27 Sloped Channel - 39.37" (1 m)	138027	64.50	55.6	28
Type 4000-28 Sloped Channel - 39.37" (1 m)	138028	64.50	56.5	28
Type 4000-29 Sloped Channel - 39.37" (1 m)	138029	64.50	57.4	28
Type 4030 Constant Depth Channel - 39.37" (1 m)	138036	64.50	58.0	28
Type 4000-0303 Constant Depth Channel - 19.69" (0.5 m) ¹	138037	34.50	31.0	56
Type 4000-30 Sloped Channel - 39.37" (1 m)	138030	64.50	59.2	28
Closing End Cap	137090	10.75	4.5	-
108-4 4" Outlet Cap	137092	16.25	2.0	-
208-4 4" Outlet Cap	137094	16.25	2.6	-
208-6 6" Outlet Cap	137095	37.75	2.6	-
308-4 4" Outlet Cap	137097	16.25	3.3	-
308-6 6" Outlet Cap	137098	37.75	3.3	-
104-4 Inlet Cap with 4" SCH 40 pipe	137091	26.00	2.6	-
204-4 Inlet Cap with 4" SCH 40 pipe	137093	26.00	3.7	-
204-6 Inlet End Cap with 6" SCH 35 pipe	137099	53.75	3.3	-
In-Line Catch Basin - 19.69" (0.5 m)	05620	96.75	62.0	12
Plastic Catch Basin Trash Bucket	01498	34.50	1.1	-
Installation Device - 4" System	97477	16.25	2.8	-
Removable QuickLok® Bar for Catch Basin	98717	20.50	0.3	-
ACO Seal Polymer Concrete Sealant (10 oz tube)	91120	10.75	1.0	-
SAFETY EDGE CHANNELS & CATCH BASIN				
Type SE4020 Constant Depth Channel - 39.37" (1 m)*	06566	72.25	49.1	28
SE In-Line Catch Basin - 19.69" (0.5 m)*	06567	107.25	62.0	12
QUICKLOK® GRATES & ACCESSORIES				
Galvanized Slotted Grate - 39.37" (1 m) ²	31530	30.00	5.9	200
Galvanized Slotted Grate - 19.69" (0.5 m) ²	31531	15.00	3.0	100
Black Plastic Longitudinal Grate - 19.69" (0.5 m) ^{2,3}	97393	15.00	1.8	400
Gray Plastic Longitudinal Grate - 19.69" (0.5 m) ^{2,3}	97385	15.00	1.8	400
QuickLok® Locking Bar	02899	5.50	0.1	-
QuickLok® Grate Removal Tool	01318	16.25	0.3	-

Galvanized Slotted Grate



Black Plastic Longitudinal Grate



- Bottom knockouts on 0.5 m channels only.
- Load Class A: 3,372 lbs - 116 psi; EN 1433 : 2002 Drainage channels for vehicular and pedestrian areas
- ADA compliant: The Americans with Disabilities Act of 2010, Section 302.3: Where grates are used within walking surfaces, the open slots should be no greater than 0.5" (12.7 mm) wide in one direction. Where the length of the slot is greater than 0.5", the opening should run perpendicular to the main direction of traffic.

* These special products are made to order with variable lead time. Please contact ACO for product-specific information.

Complete Systems

	Price \$/ft	Price \$/m
SYSTEM 4000 COMPLETE SYSTEM		
4002 Channel with Grate	26.30	86.25
4010 Channel with Grate	28.28	92.75
4020 Channel with Grate	32.17	105.50
4000 Sloping Channel with Grate	32.17	105.50
SE4020 Channel with Grate	34.53	113.25