

# Road ecology: Tools to help achieve sustainable growth



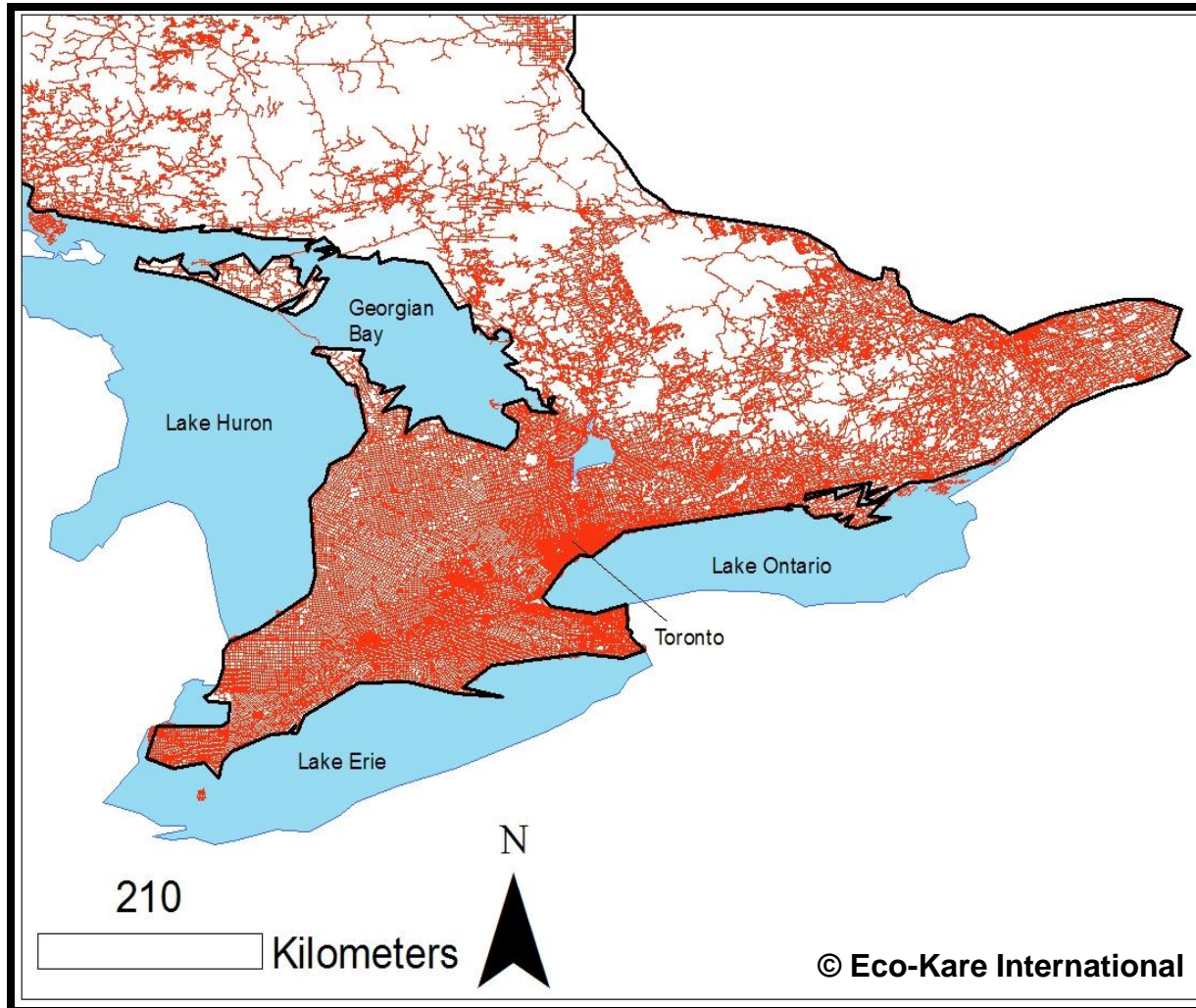
*Protecting Biodiversity From the Threats of Roads*

# Road Ecology

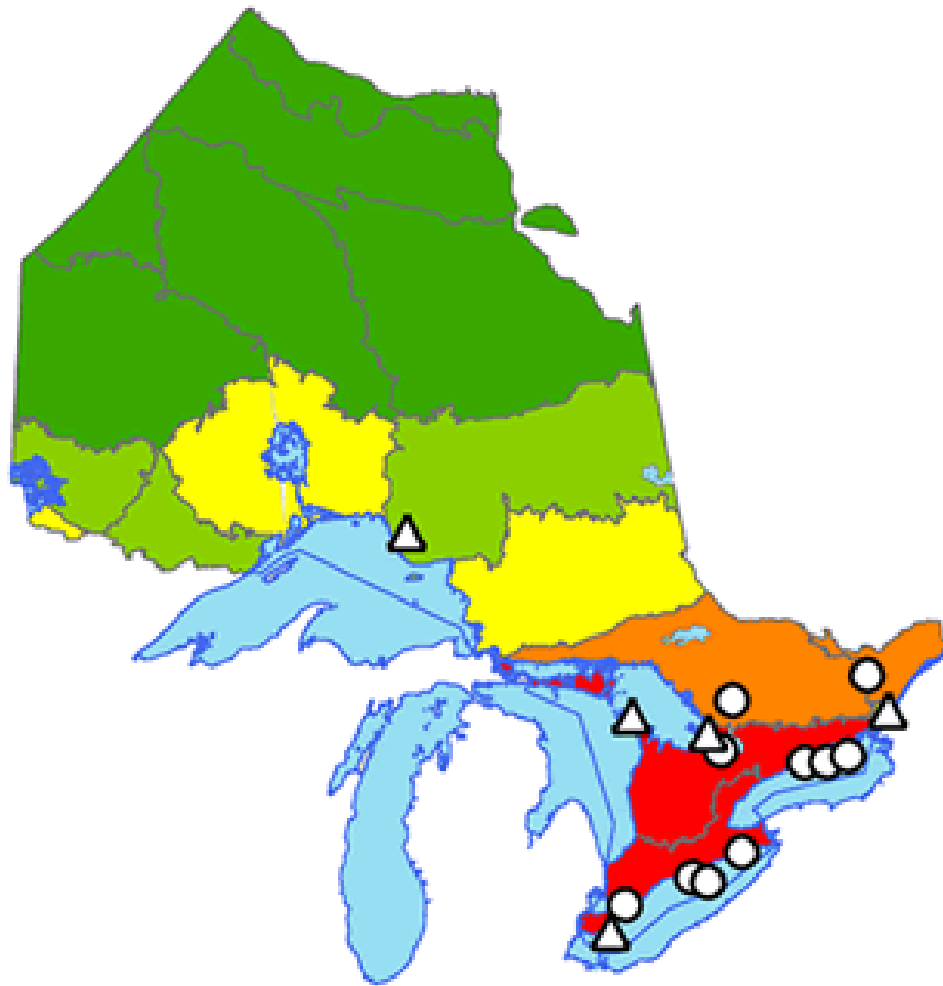
Study of the interaction of organisms and the environment as they relate to roads and transportation networks.



# Southern Ontario Road Network



# Species At Risk Richness



■ Very High

■ High

■ Medium

■ Low

■ Very Low

○ National Wildlife Areas

△ National Parks

# MTO Statistics

- WVC: 1 every 37 minutes
- 1/16 collisions is a WVC
- WVC ↑ annually
- 2006:14,482 collisions were reported



\*\*\*many more go **unreported**\*\*\*





# Wildlife Road Mortality Studies

- 1000 Islands Pkwy
- Long Point Causeway
- Heart Lake Road, Brampton
- Rouge Park
- Various CAs



# Greater Golden Horseshoe

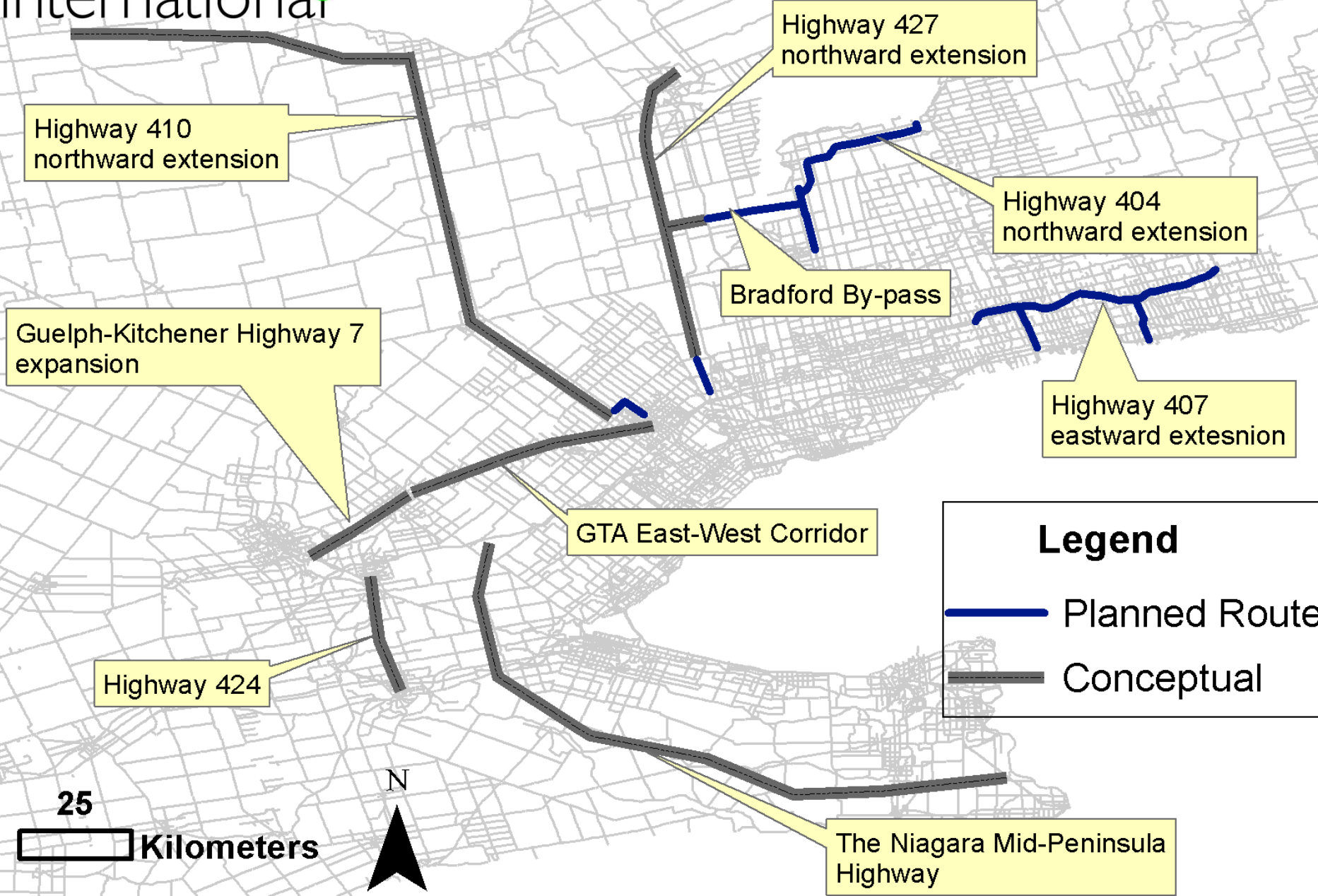


## PLACES TO GROW

BETTER CHOICES. BRIGHTER FUTURE.

The Places to Grow Act, 2005  
and Transition Regulation







# HABITAT LOSS



# Habitat Loss

- Fragmentation
- Degradation
  - Litter
  - Noise
  - Light
  - Chemical
  - Heat
  - Vibration
  - Spread of Invasive Species





© Janine Holman

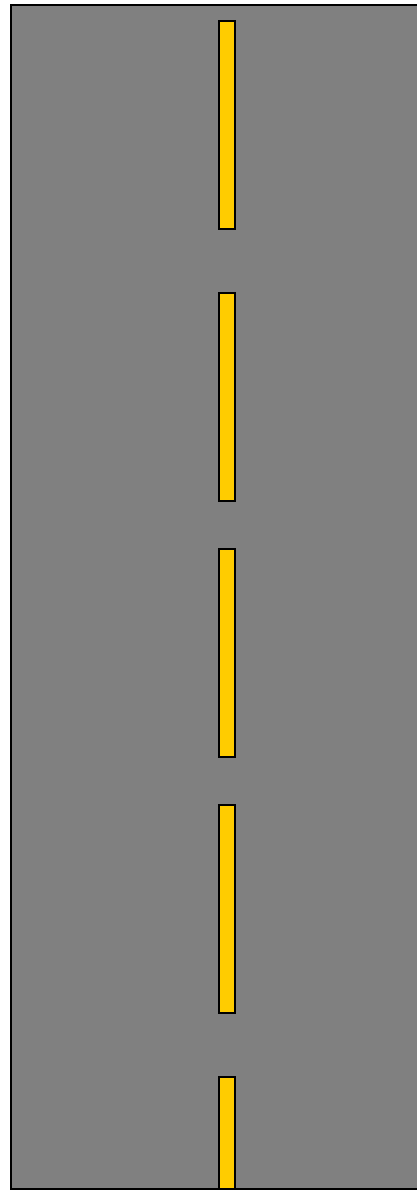
**DIRECT MORTALITY**



## Wildlife/Vehicle Collisions

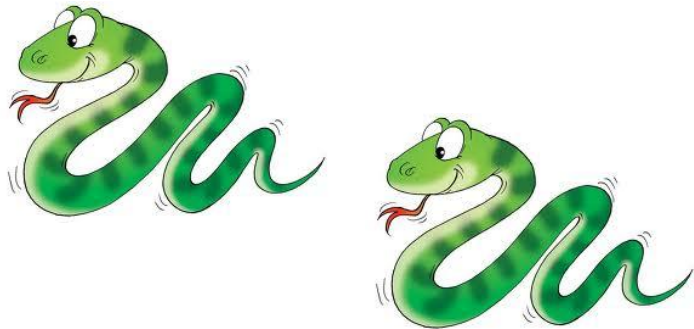
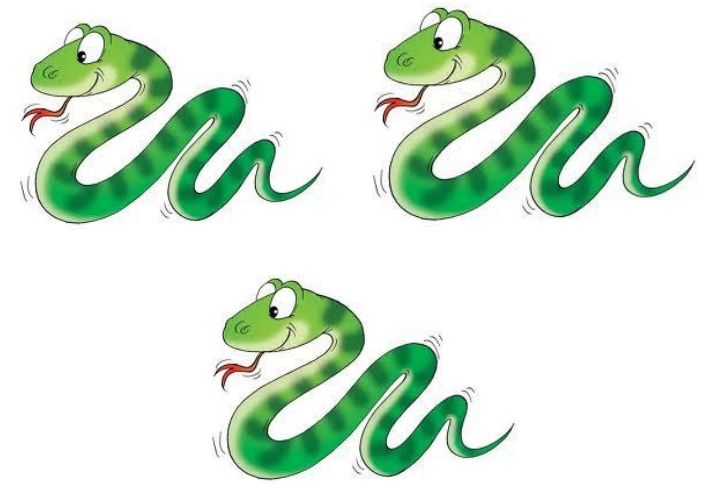
- Loss of biodiversity
- Motorist safety
- High cost (insurance, damages)





**INACCESSIBILITY**



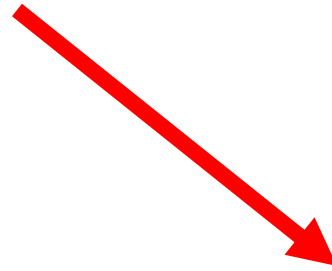


POPULATION SUBDIVISION





Lonesome George



**Extirpation/Extinction**





# Endangered Species Act



# ESA: Implementation

## *Streamlined Approaches for New Activities to Benefit Species*

**Standardized Condition Approach:** For certain types of activities, where overall benefit permit conditions have been well established, activities could proceed without an ESA approval, provided that individuals or businesses follow rules established in regulation, which may include registration with MNR, that are designed to benefit the species and to draw on the experience MNR has had with standard overall benefit permit conditions.

Proposed examples of this Standardized Condition Approach would be as follows:

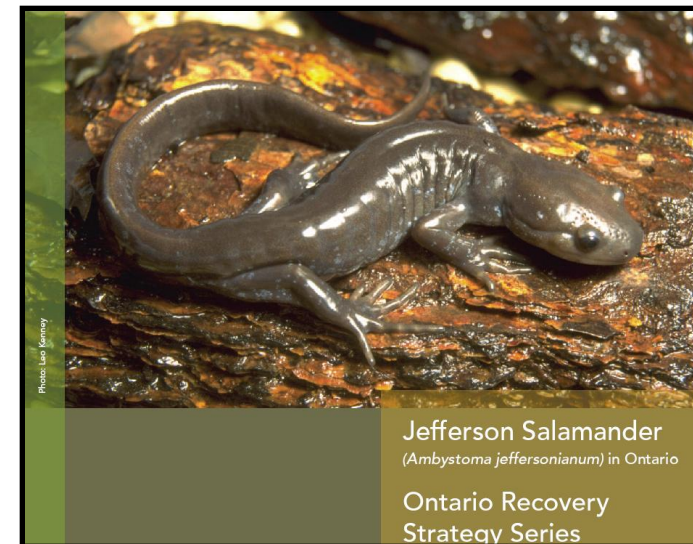
**Road improvement activities with the protection of reptiles and amphibians and benefits provided through the installation of fencing and improved passage.**

# Recovery Strategies

## 2.3 Approaches to Recovery

Table 3. Approaches to recovery of the Jefferson Salamander in Ontario

Priority	Objective Number	Broad Approach/ Strategy	Specific Steps	Measurable Outcomes
Urgent	4	Habitat protection	<ul style="list-style-type: none"> <li>Work with planning authorities to encourage integration of the habitat regulation into official plans and other relevant planning processes</li> </ul>	<ul style="list-style-type: none"> <li>Percentage of the reviewed official plans that integrate protection of the areas prescribed in the habitat regulation</li> </ul>



- Mitigate Road Mortality – Threat Priority: Urgent/Critical

[HOME](#) | [ABOUT US](#) | [PROGRAMS](#) | [PUBLICATIONS](#) | [NEWSROOM](#) | [GALLERY](#) | [JOBS](#) | [CONTACT US](#)[Home](#) > [Species at Risk](#) > [Planners, Developers & Resource Professionals](#)[Special Initiatives](#) >[In This Section](#) v

- ▶ [Ontario Species at Risk Home](#)
- ▶ [What's at risk in Ontario?](#)
- ▶ [What's at Risk in My Area?](#)
- ▶ [Action We're Taking](#)
- ▶ [What you can do](#)
- ▶ [Planners, Developers & Resource Professionals](#)
- ▶ [Organizations and Associations](#)
- ▶ [Landowners and Farmers](#)
- ▶ [Field Notes](#)
- ▶ [Learning Resources](#)
- ▶ [Permits & Other Authorizations](#)

## Species at Risk

### Planners, Developers & Resource Professionals

#### How to incorporate species at risk into what you do

Whether you help to plan, manage, consult on or work directly on projects or operational activities, your role is to keep things on track. That includes knowing how the Endangered Species Act may apply to your situation, how it may influence your planning, and what steps to take to make sure your plans comply with it.



Since the act is comprehensive and covers over 200 species, figuring out how it applies may not always seem simple. Situations vary by activity and species, but also by location and season in relation to species' breeding, migration and other life stages. That's why your best resource is practical guidance, both from this website and the Ministry of Natural Resources. Ministry staff can help you understand how the act applies to different scenarios and develop localized strategies that make the most sense for your activity and the species.

July 2013

News / Insight

## How a turtle toppled Prince Edward County wind turbines

Former premier Dalton McGuinty could never have imagined the Blanding's turtle would thwart his dream of a wind-driven green economy in Ontario.

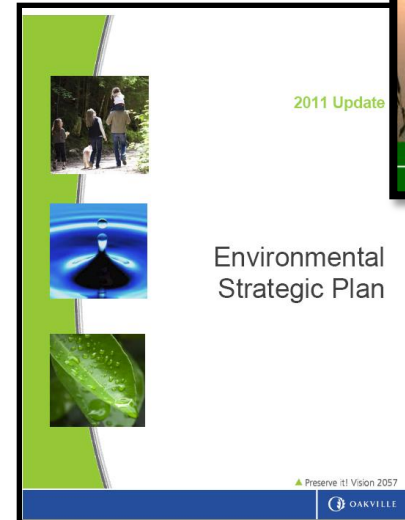


On July 3rd and Environmental Appeal Tribunal revoked the approval of Gilead Power's Ostrander Point wind turbine project, concerned of damage to the habitat of the Blanding's turtle.



# Road Ecology: Locally

- Goals – Sustainable Growth
- Recognize importance of:
  - Connectivity
  - Biodiversity
  - Resilient ecosystems
  - Watershed health
  - Economical value
  - Community value
    - Sense of well being, safe
    - Property value



# Legislation

- Federal:
  - Species at Risk Act
  - Fisheries Act
  - Migratory Birds Conservation Act
  - Canadian Environmental Assessment Act
- Provincial:
  - Endangered Species Act
  - Conservation Authority Act
  - Provincial Policy Statement
  - Greenbelt Plan
  - Oak Ridges Moraine
  - Places to Grow Act C.P.
- Regional Official Plans
- Environmental Assessments



# Applying Road Ecology

- Identify **target species** and characterize the landscape from the species' movement perspective;
- Predict and prioritize where **mitigation** should be focused to enhance wildlife movement; and
- Provide guidance on appropriate mitigation, management and **monitoring** measures



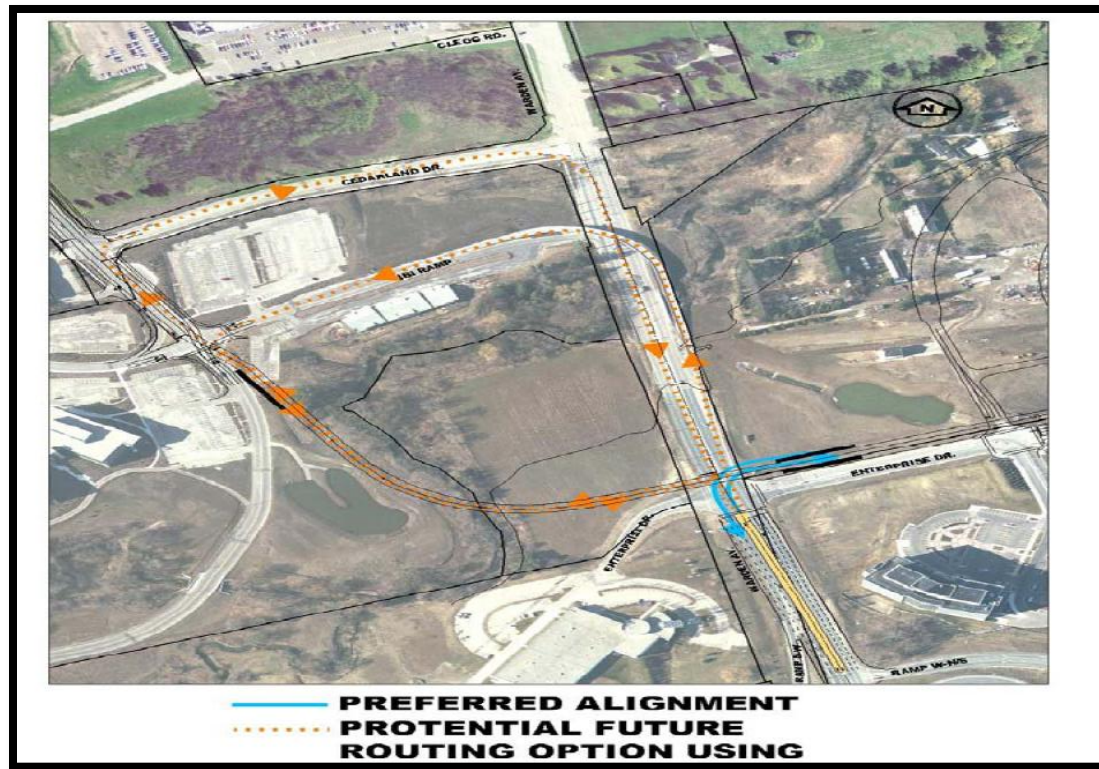


# Road Ecology Tools



# Road Design Elements

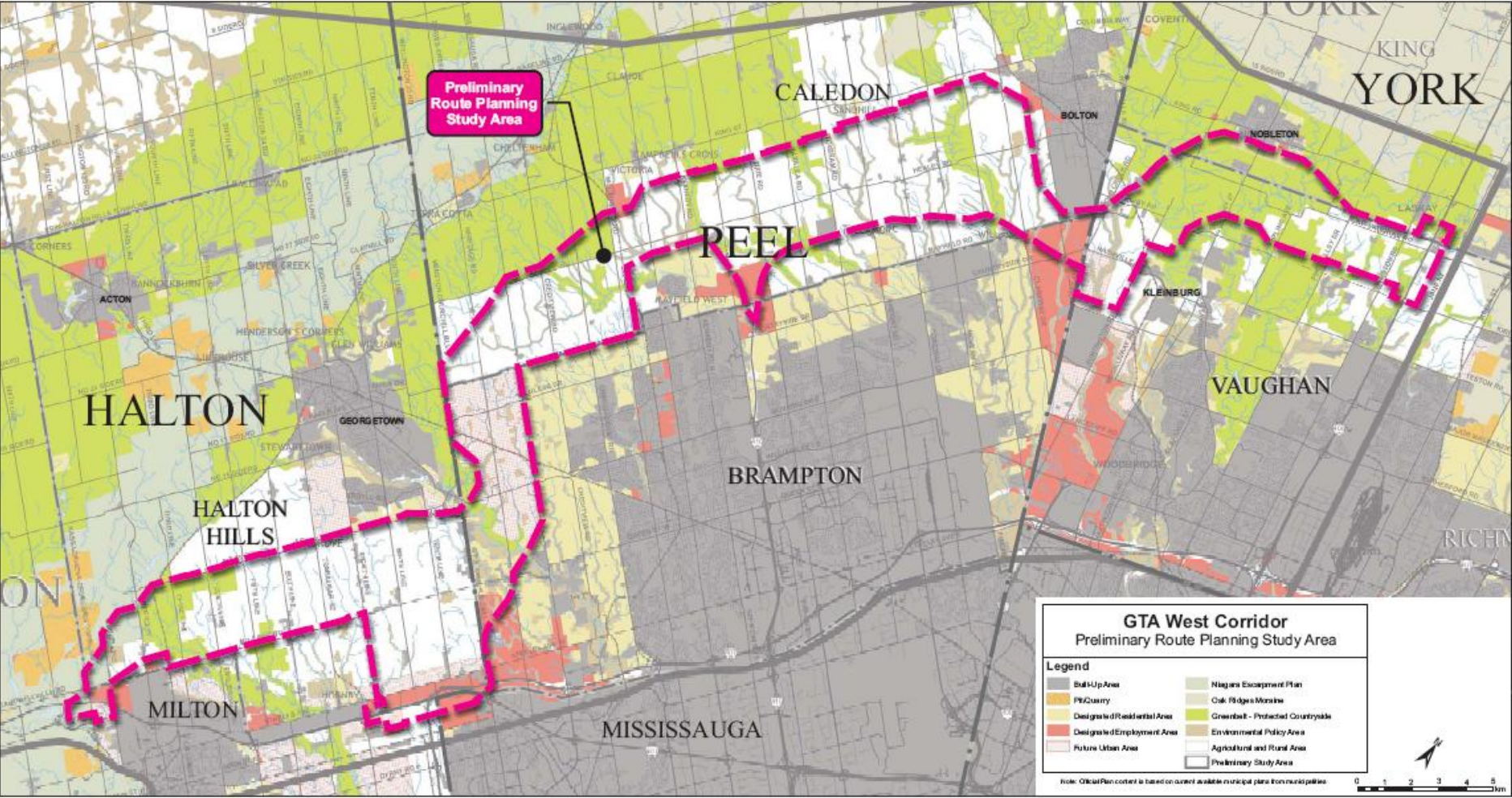
- Route Alignment/Technically Preferred Route





# GTA West

GTA West Corridor  
Environmental Assessment  
Terms of Reference and Environmental Assessment Study

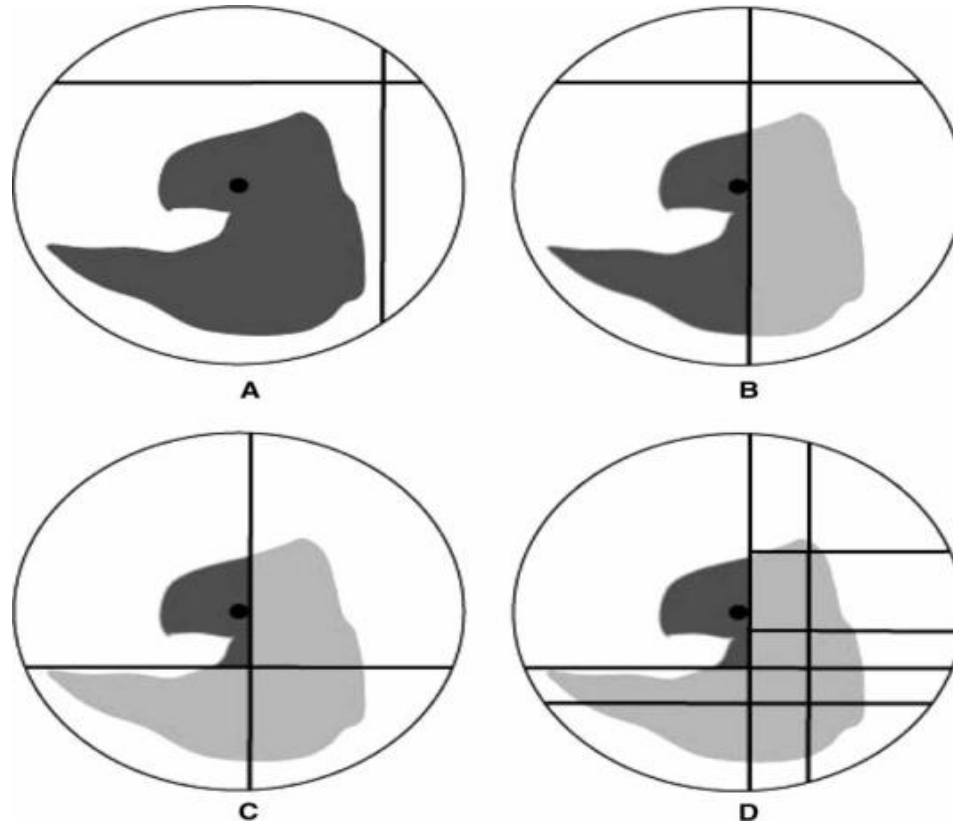


# Habitat Analysis

- Wetland/Woodlot – proximity to road, level
- Stream Crossing
- Valley Crossing

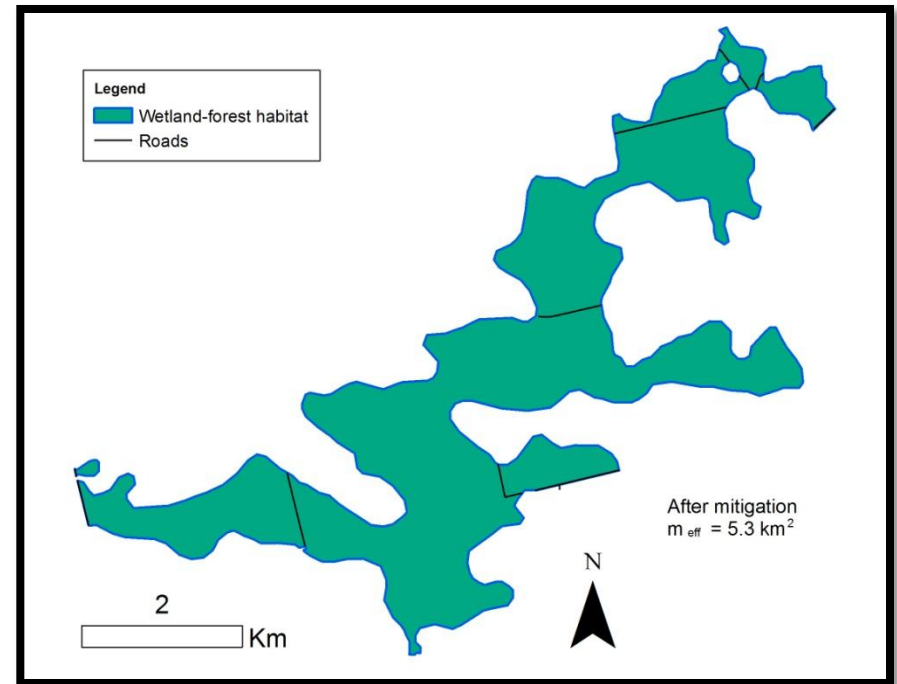
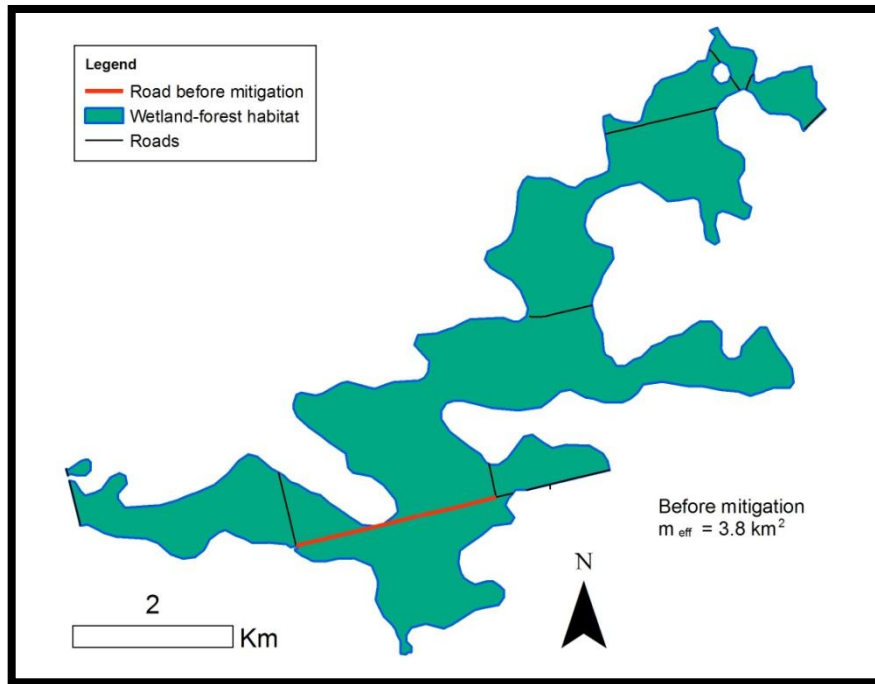


# Accessible Habitat Analysis



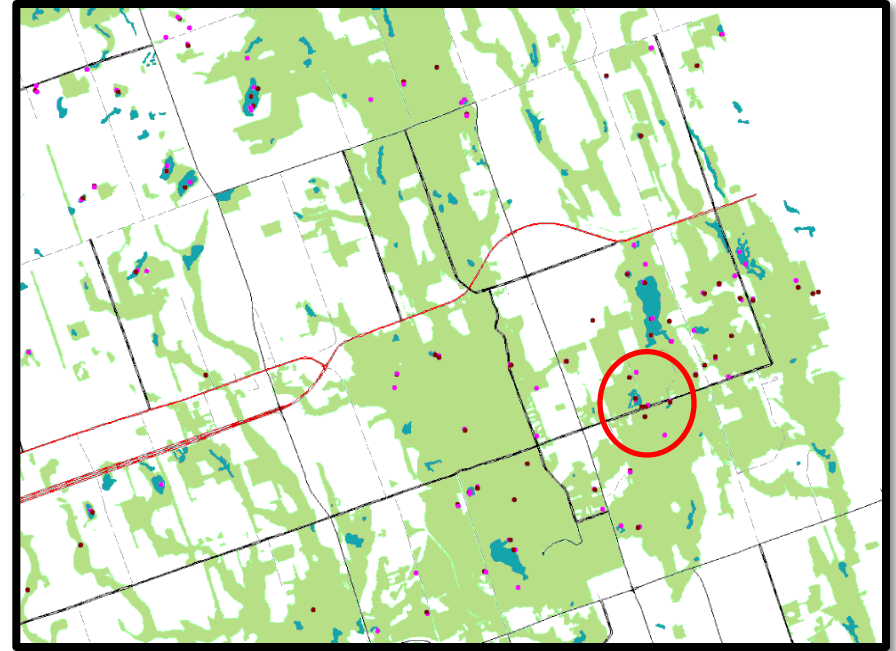
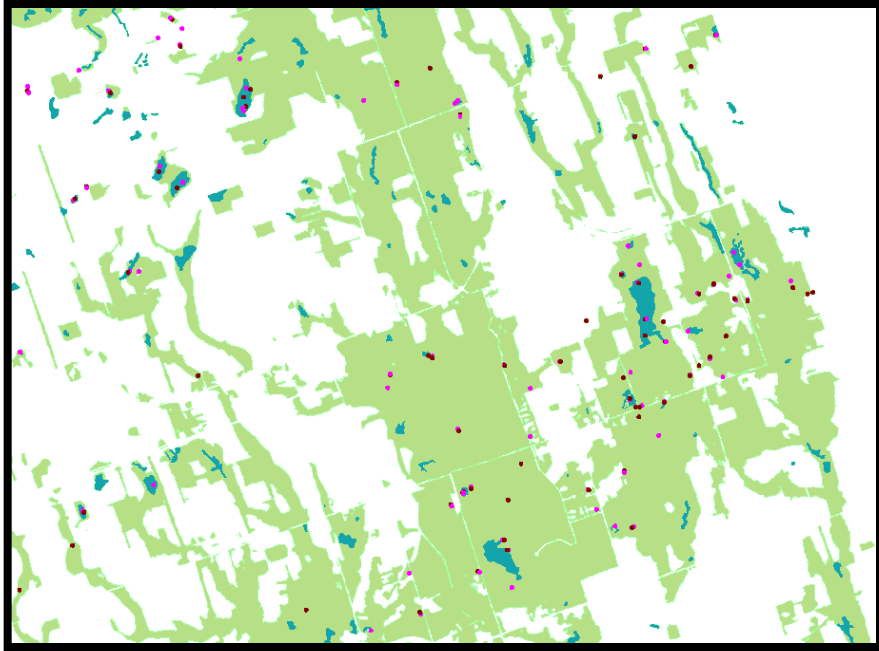
Eigenbrod *et al.* 2008

# Effective Mesh Size



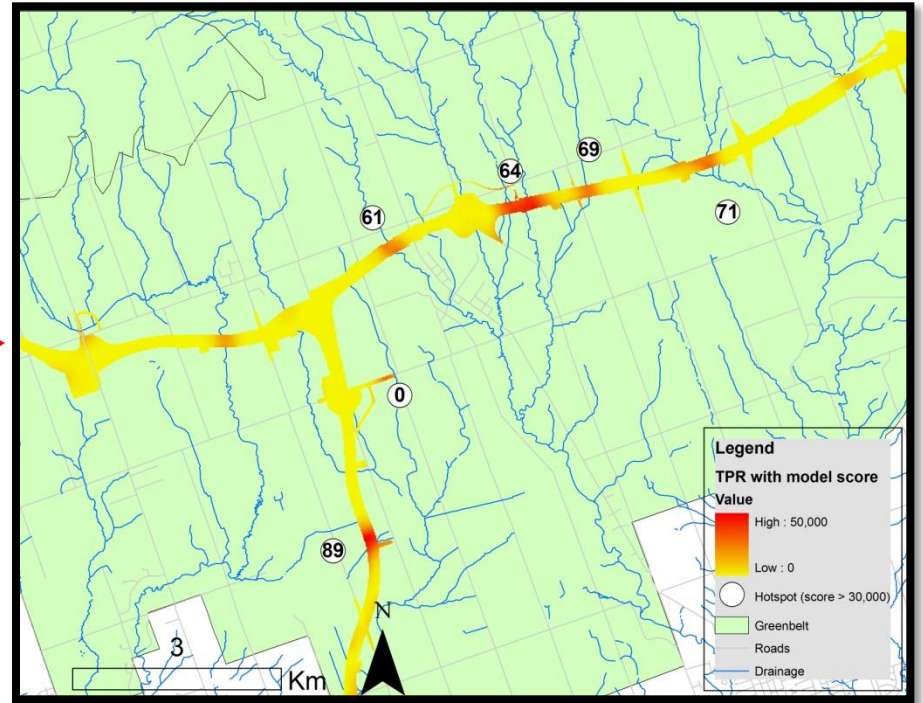
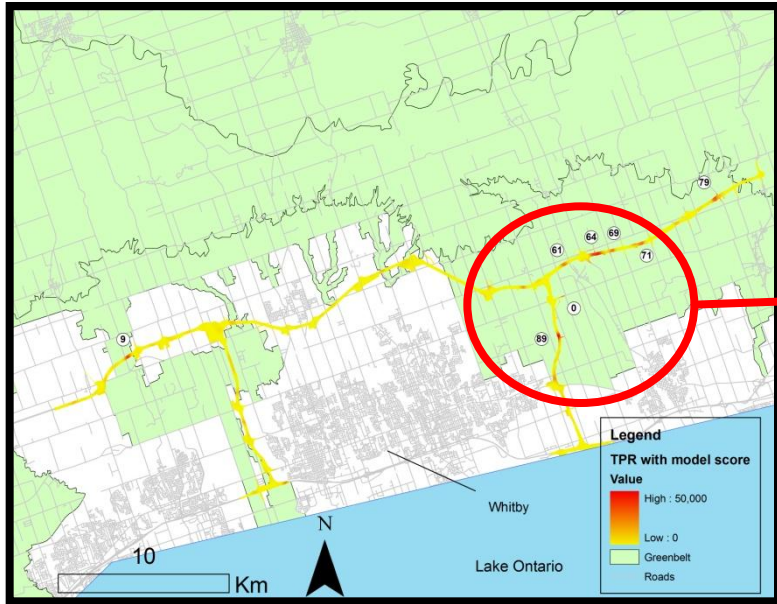
Jaeger 2000

# GIS Mapping



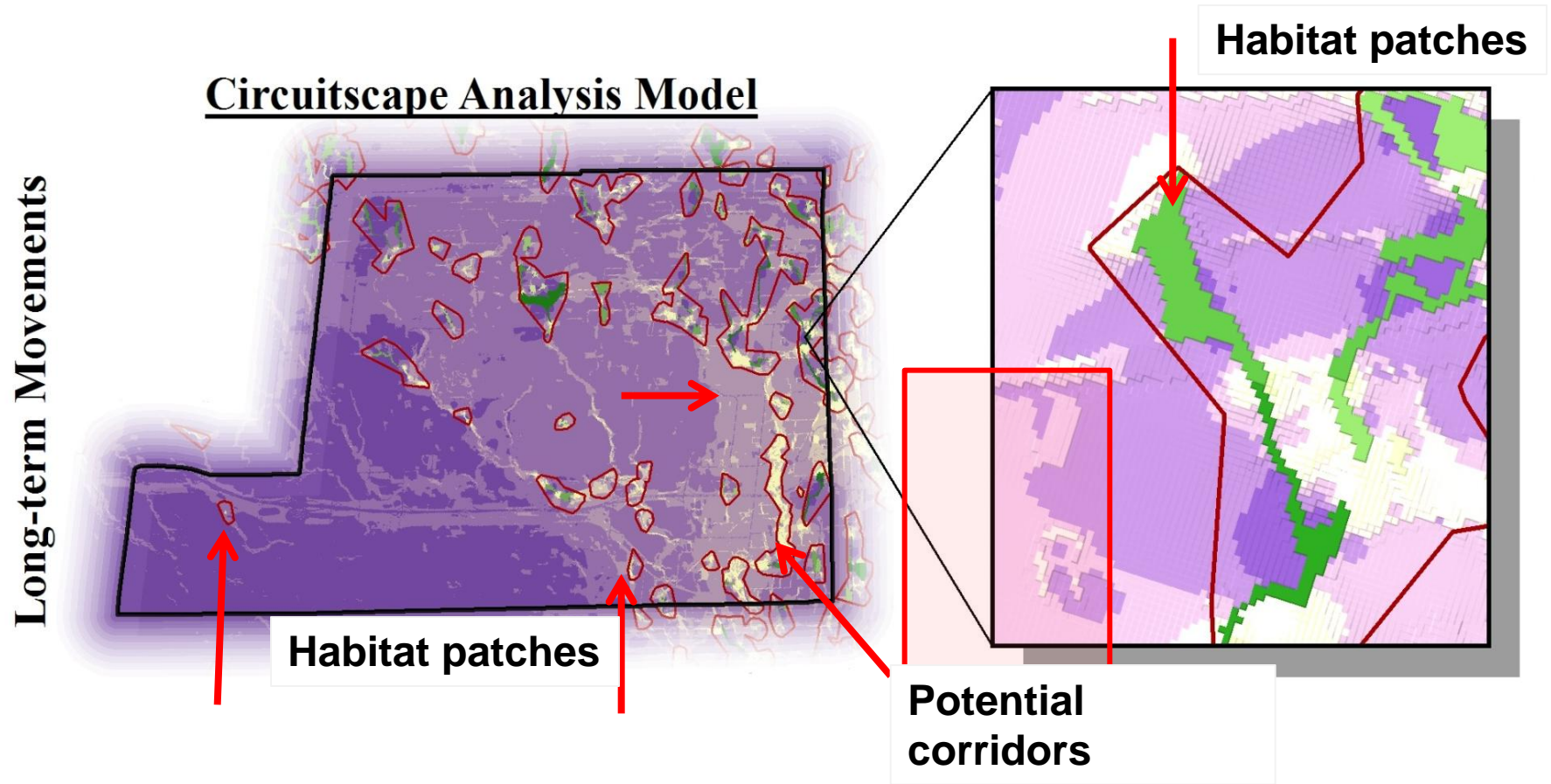
Natural cover & Species points + Road Barrier Effect = Priority Mitigation Sites

# GIS Analysis

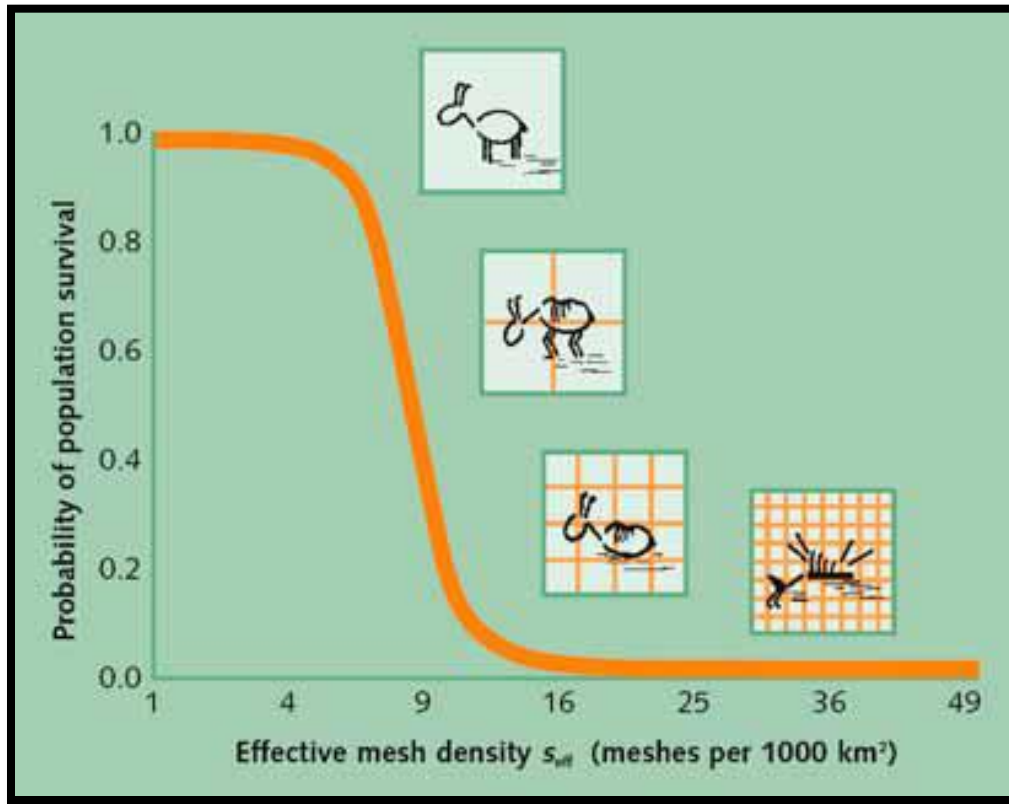




# Movement Probability Analysis

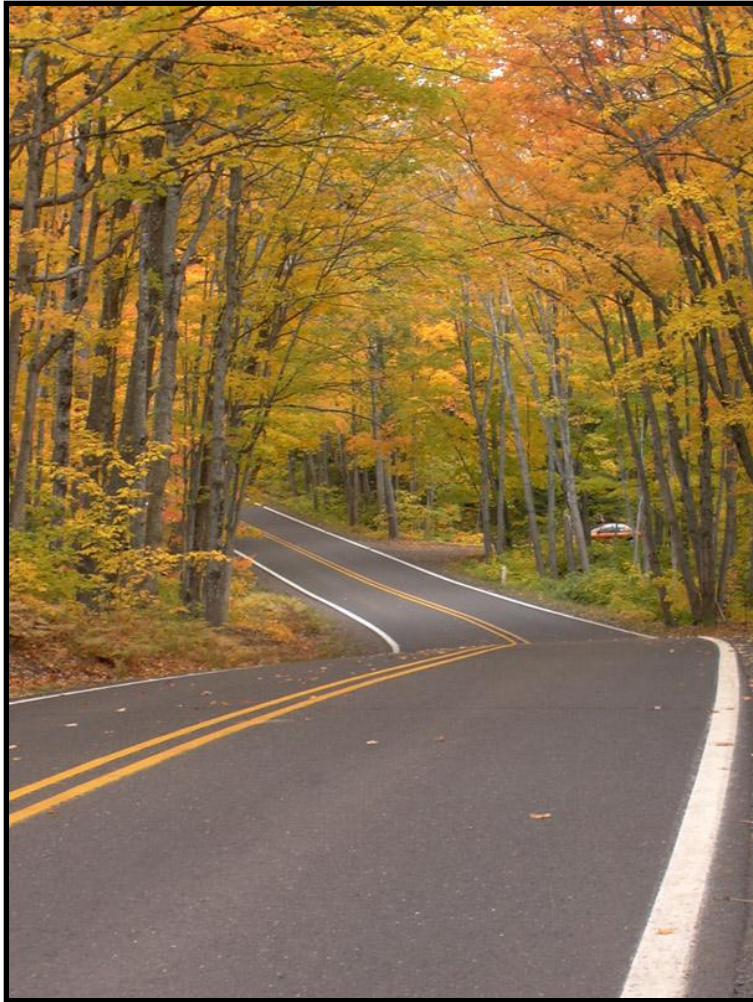


# Population Mortality Thresholds



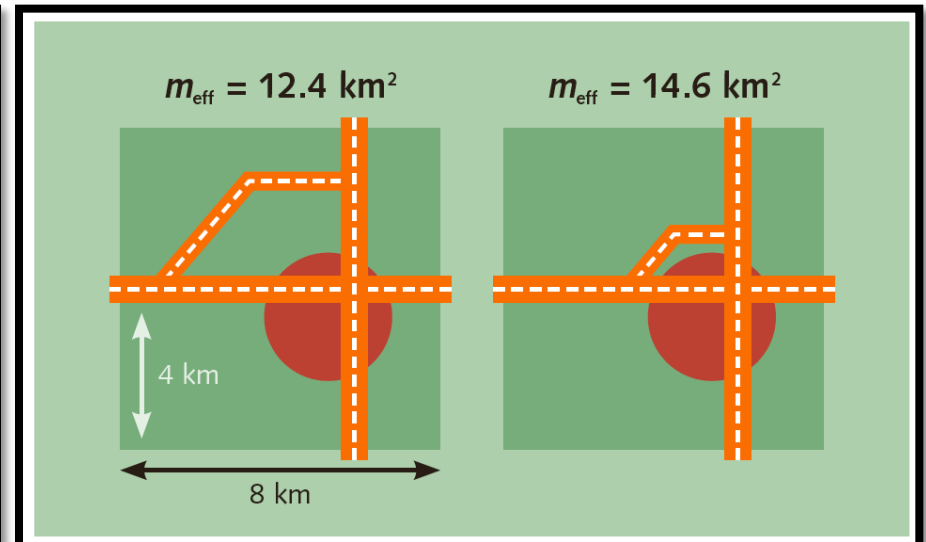
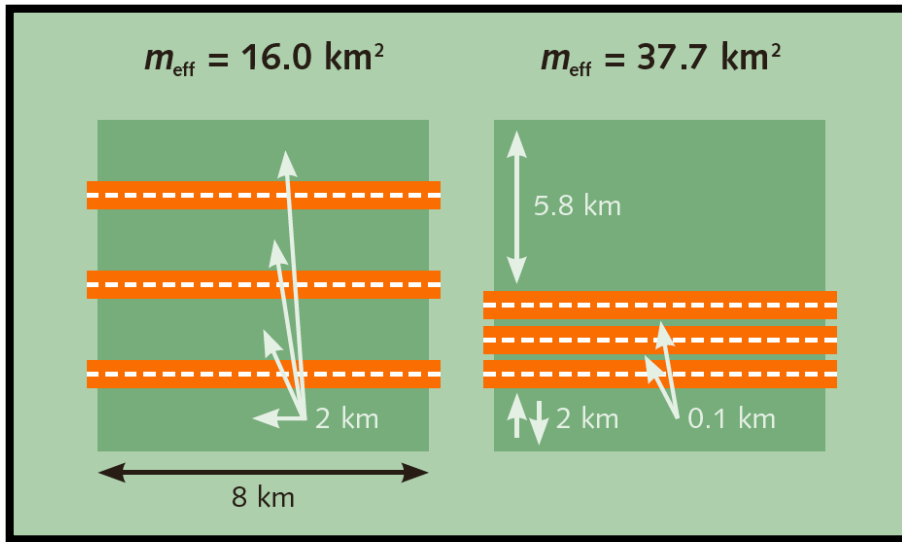
Jaeger and Holderegger 2005

# Road Design



# Road Design

- Route Bundling
- By-pass Placement



Jaeger and Holderegger 2005

# Mitigation Options

- Avoid new road construction
- Retrofit existing roads
- Collect data → Road Closures

Mar 12, 2013 | Vote 0 0

## Burlington to close King Road for salamander crossing

The dates are now set for the 2013 temporary closure of a portion of King Road to permit a safer breeding season for the endangered Jefferson Salamander.

Bruce Zvaniga, the city's director of transportation services, announced Monday that the closure will run from March 18 to April 8.


The road will be closed from the escarpment to Mountain Brow Road using concrete barricades behind portable barricades.

City council committed last year to closing the identified portion of the road every spring for three weeks to allow the endangered salamanders to cross King Road to get to their breeding pools safely.

Conservation Halton says there are approximately 100 Jefferson Salamanders living in the King Road area.

The city estimates the closure will cost approximately \$1,500.

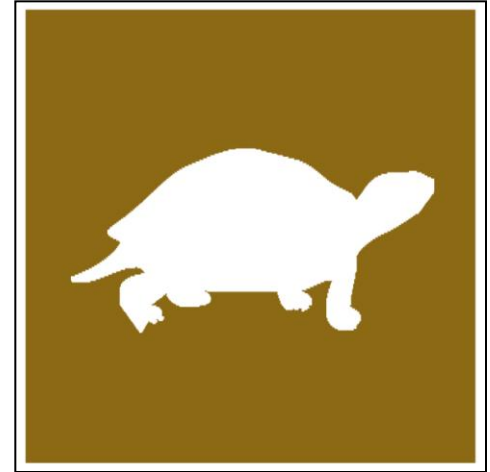
*Burlington Post*



**SALAMANDER CROSSING**  
Photo courtesy of Hamilton Conservation Authority  
*Burlington is closing King Road for three weeks to facilitate the breeding of the endangered Jefferson Salamander.*



# Signage/Raise Awareness



# Speed Limits and Bumps



# Curb/Median Design





# Fencing and Ecopassages



# Engineering Considerations

- Approach
- Aspect Ratio
- Line of Sight
- Light
- Moisture
- Bottom substrate
- Hydrology



ESC



# Always Question....

Does mitigation protect at the population level?



# Monitor



5-10 21:37:18 M 3/3

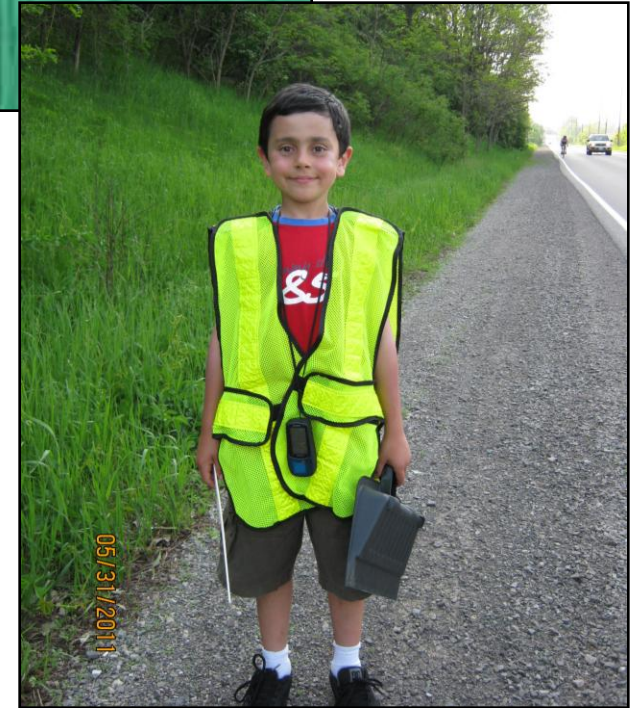


CAMERA #6

RECAMERA



# Community Engagement



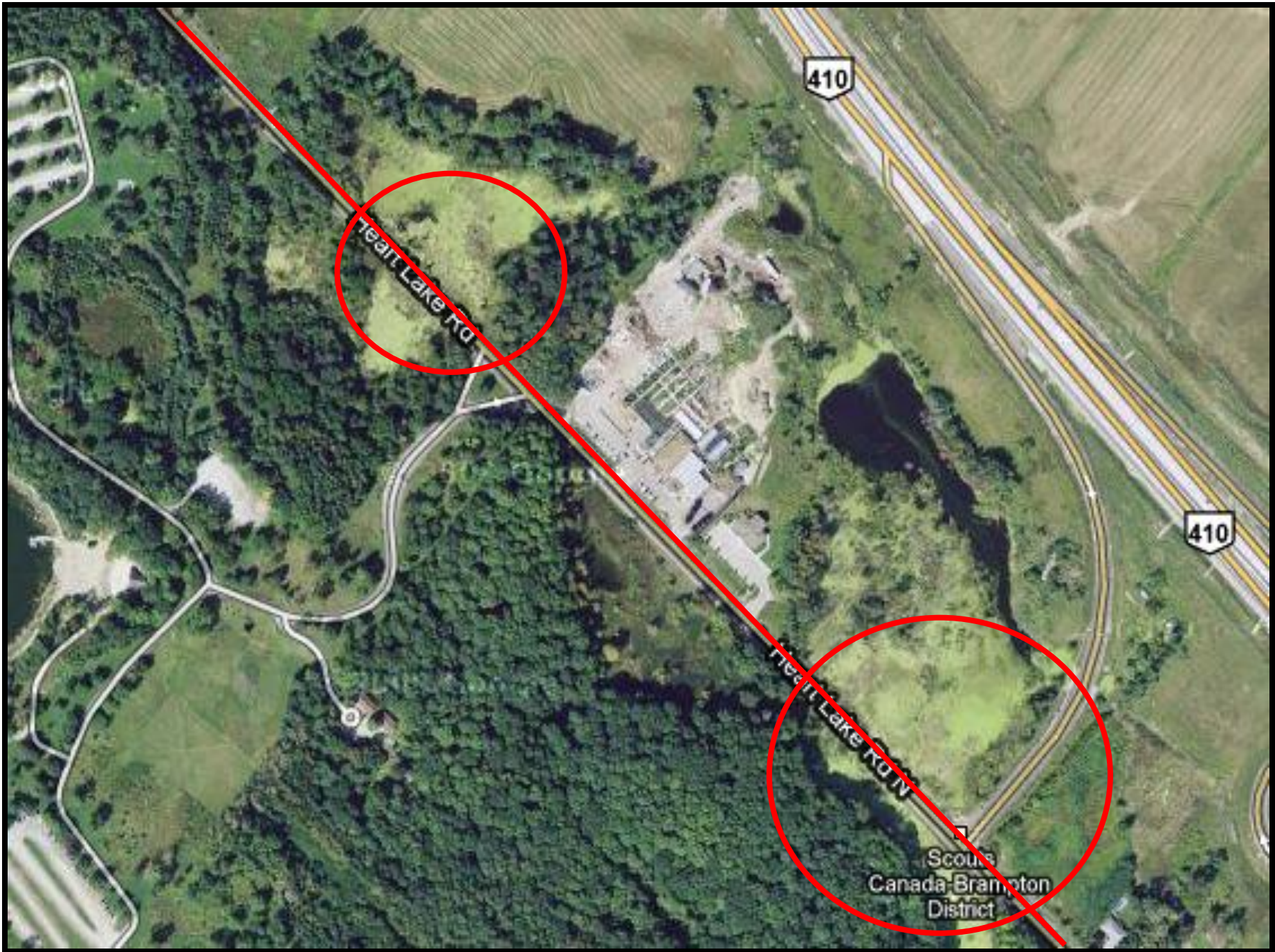
“The reaction was positive towards the road closure last year and shows how the community will support steps to protect the local environment,” said Rick Craven, Councillor, City of Burlington.



# Stewardship to Solutions







Heat Lake Rd

410

410

Heat Lake Rd

Scout's  
Canada Brampton  
District





2 lane road bisecting PSW

# The Process

## May 2010

4 DOR PTs



Reported



OREG, TRCA, City of Brampton  
Site Visit & Sign Placed



# The Process

## March 2011

Front Page  
Article

Community Meeting:  
> 70 Attended

Volunteers Recruited



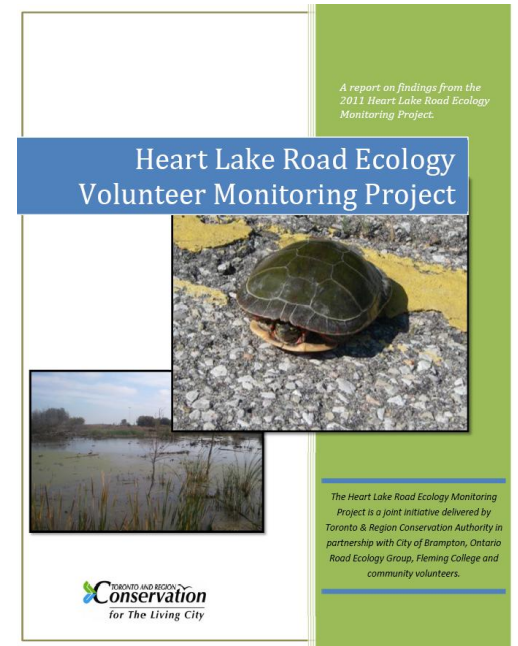
# The Process

## May - October 2011

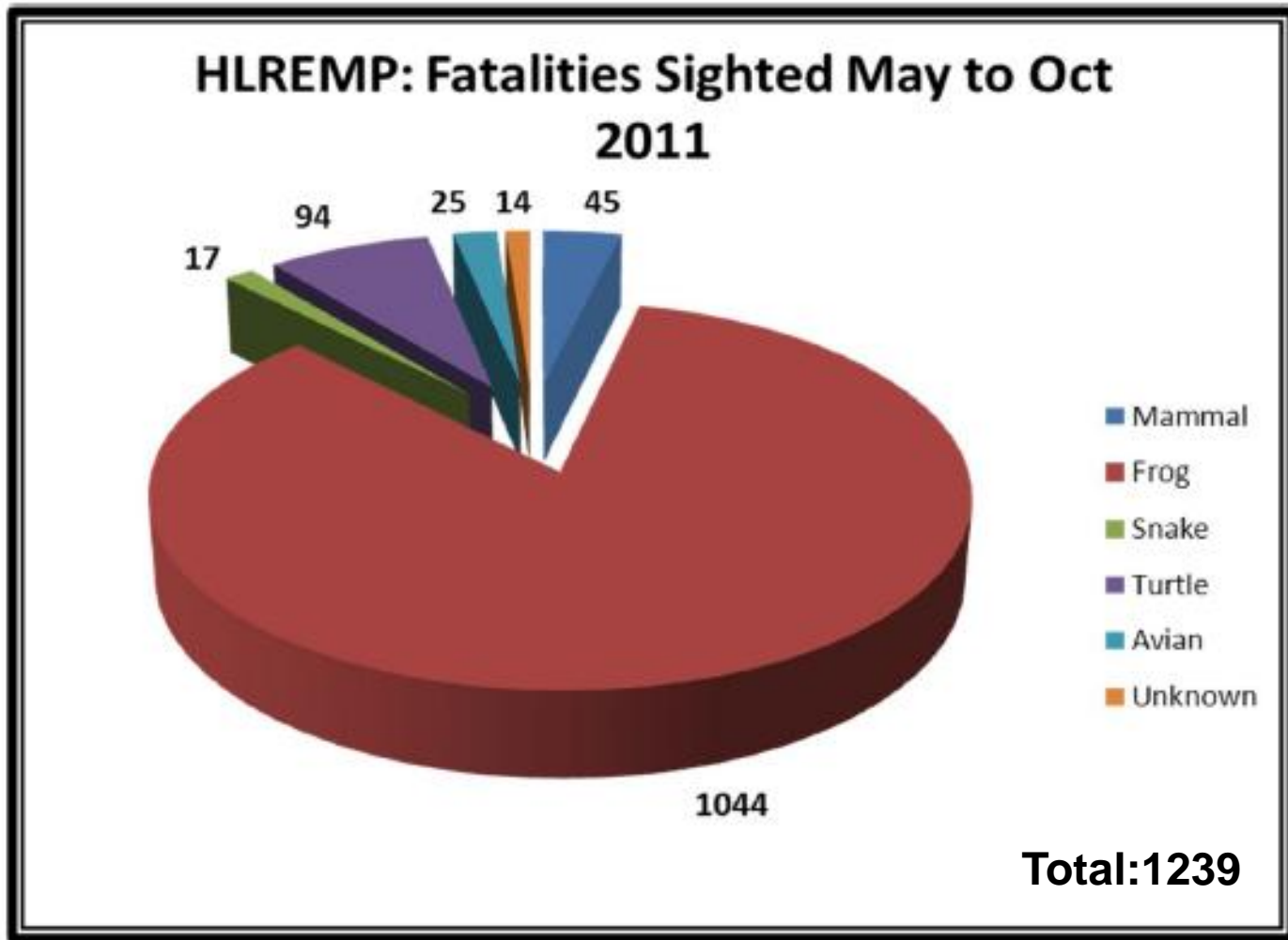
Trained  
Volunteers

Collected Data

Reported



# Findings



# Solutions

- ✓ Flush culverts ~ Completed Summer 2012 by the City.
  - *Brampton Environmental Planning and Advisory Committee passed the motion in Dec. 2011 after TRCA presented the HLREMP findings.*



# Solutions

- All future development along HLR be required to install mitigation (e.g. fencing to culverts)
  - *Recommendation supported by City of Brampton Works & Transportation and TRCA.*



# Solutions

- Install fencing & ecopassages



© Rick Levick



©ACO Wildlife



# Next Steps...

- Meet with City of Brampton engineers



# Explore the Options...

## 1. Retro-fit existing culverts?

- Find
- Location
- Submerged
- Small
- CSPs



## 2. Research ecopassage design

- Considerations: PSW, sinking road, climate



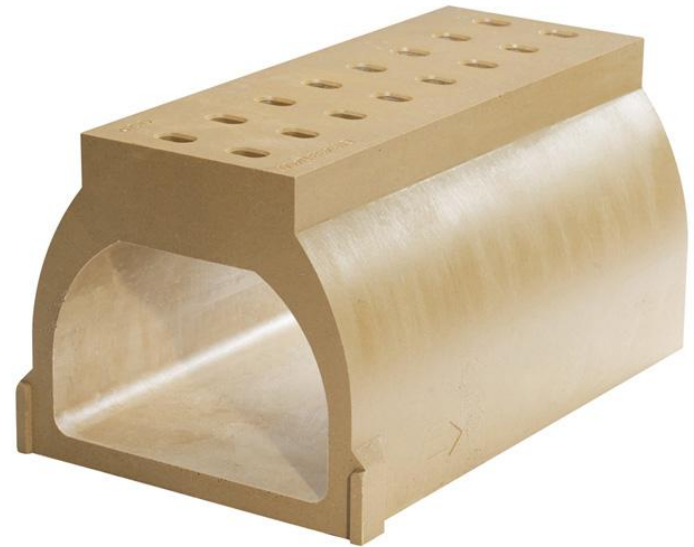
## A Brief Review of Installed ACO Wildlife Guidance Systems in Canada

Prepared by OREG 2013



© ACO Wildlife

- 5 (ON, AB, QC, + 1 in U.S.)
- Perform well in N.A. climate
- Wildlife move through



ecokare  
international



©ACO Wildlife



© Casey Cook



© Casey Cook





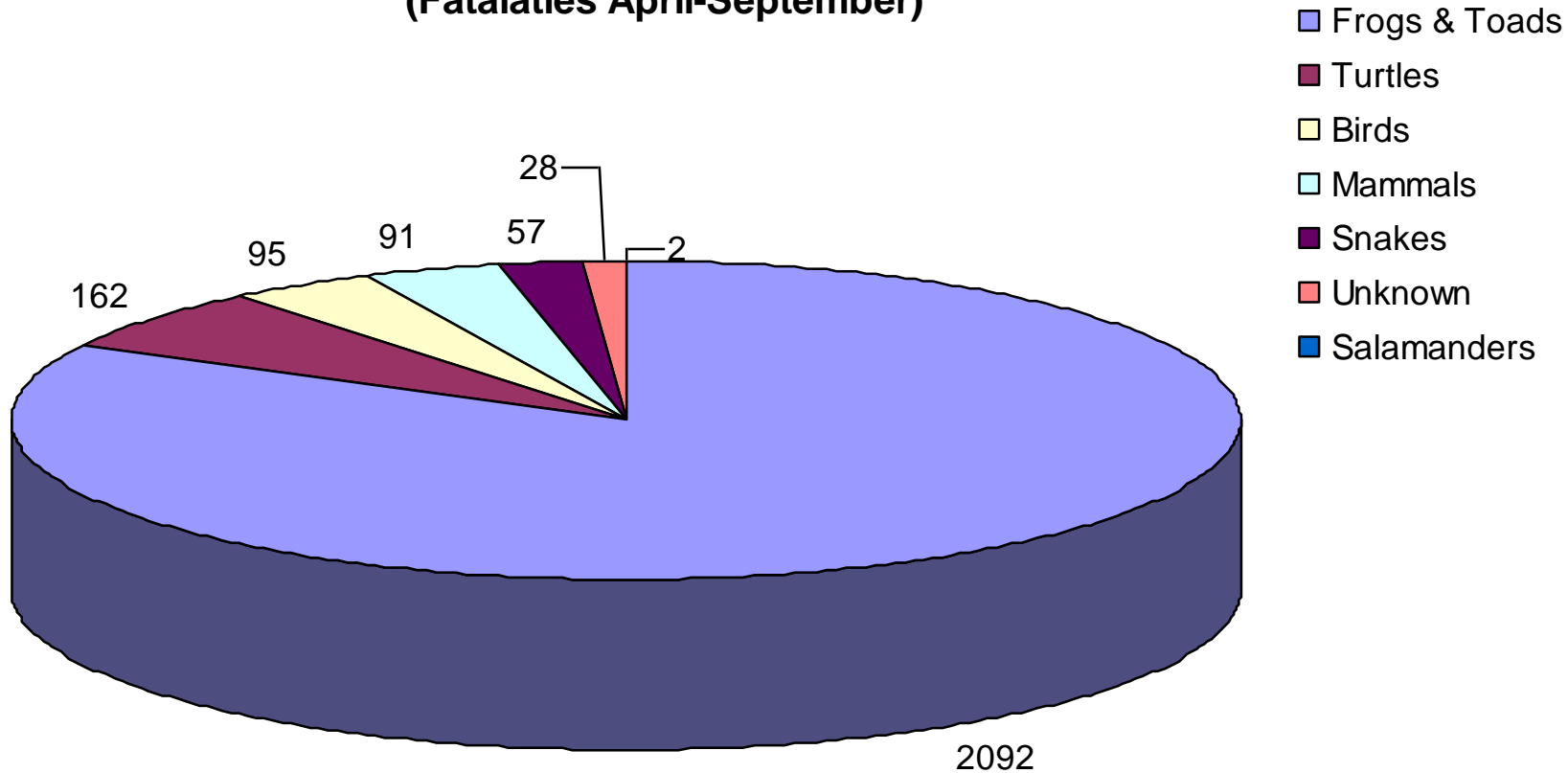


# 2013 Successes

- ✓ Mitigation is in the ground (w/ protocol)
- ✓ Continued WVC data collection
- ✓ Wildlife camera trials
- ✓ Explore habitat creation



## Heart Lake Road Ecology Volunteer Monitoring Project 2013 (Fatalities April-September)



“If you kill 5% of adult turtles each year above the normal rate of mortality, the population will go extinct. It’s inevitable.”  
Ron Brooks

**Total = 2527**

# Next Steps...

- Ecopassage study for 2014
- Work with project partners
  - Budget
  - Material, Installation, Methods, Timing
- Maintenance & Monitor



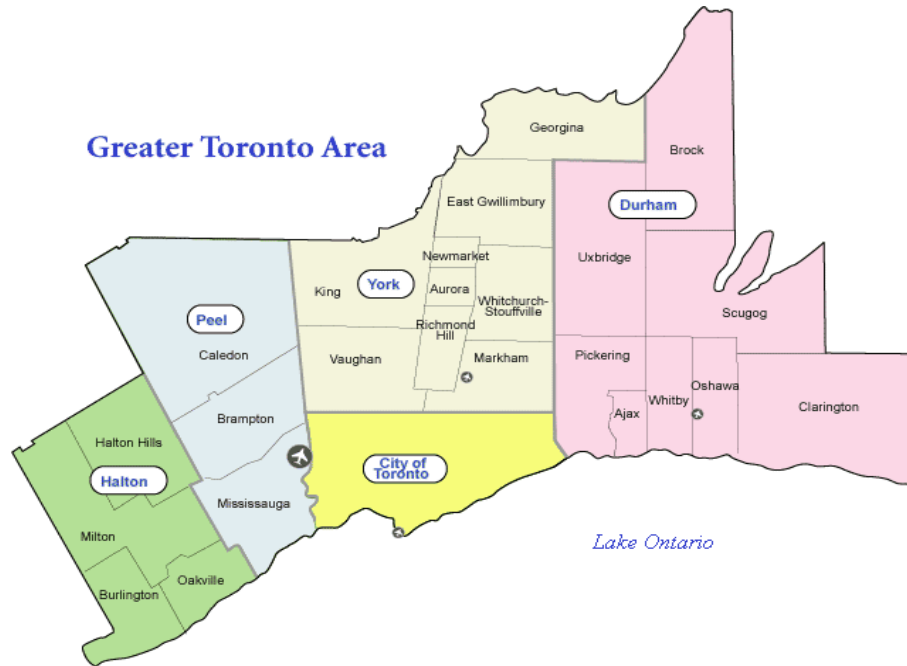
# Thank You...

- Vince D'Elia, TRCA Project Manager
- Casey Cook, TRCA Technical Assistant
- Alana Zibrowski, OREG Field Researcher
- Bob Noble, Citizen Scientist
- HLREMP Volunteers, Leo O'Brien
- City of Brampton
- ACO Systems Ltd.



# Moving Forward

- Work within municipalities
  - Research, mitigation, monitoring
- Partner across regions/municipalities/NHSs



# Partnerships

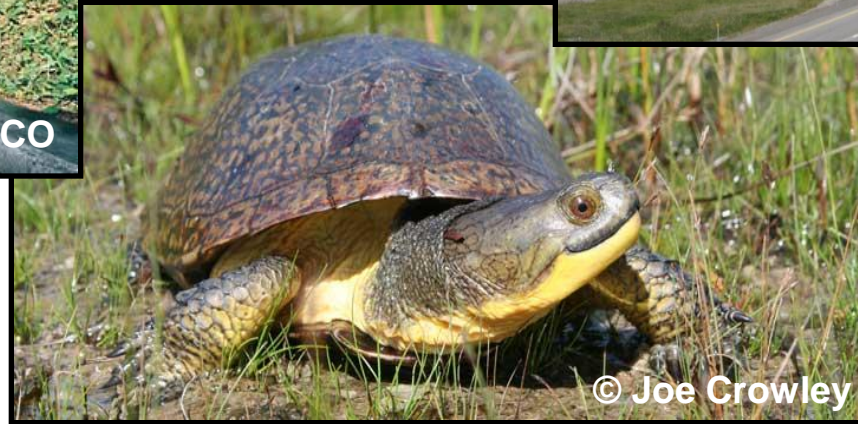
## Measuring the Sustainability Performance of New Development

Goal: To establish Sustainable Design Guidelines as one set of planning tools to achieve healthy, complete sustainable communities in each city.



# Ultimate Goals

1. Landscape connectivity across Ontario
2. Protect and recover biodiversity and SAR





# Thank You!



[ontarioroadecologygroup@gmail.com](mailto:ontarioroadecologygroup@gmail.com)